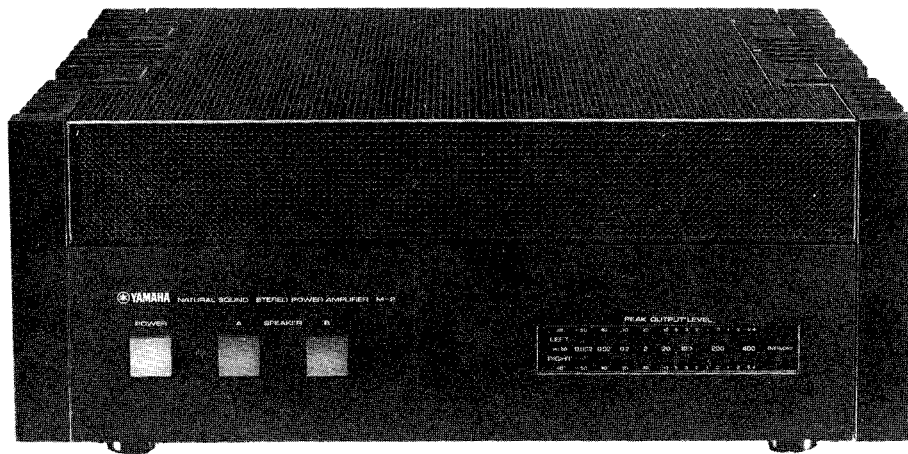



SERVICE MANUAL

M-2 STEREO POWER AMPLIFIER



004384

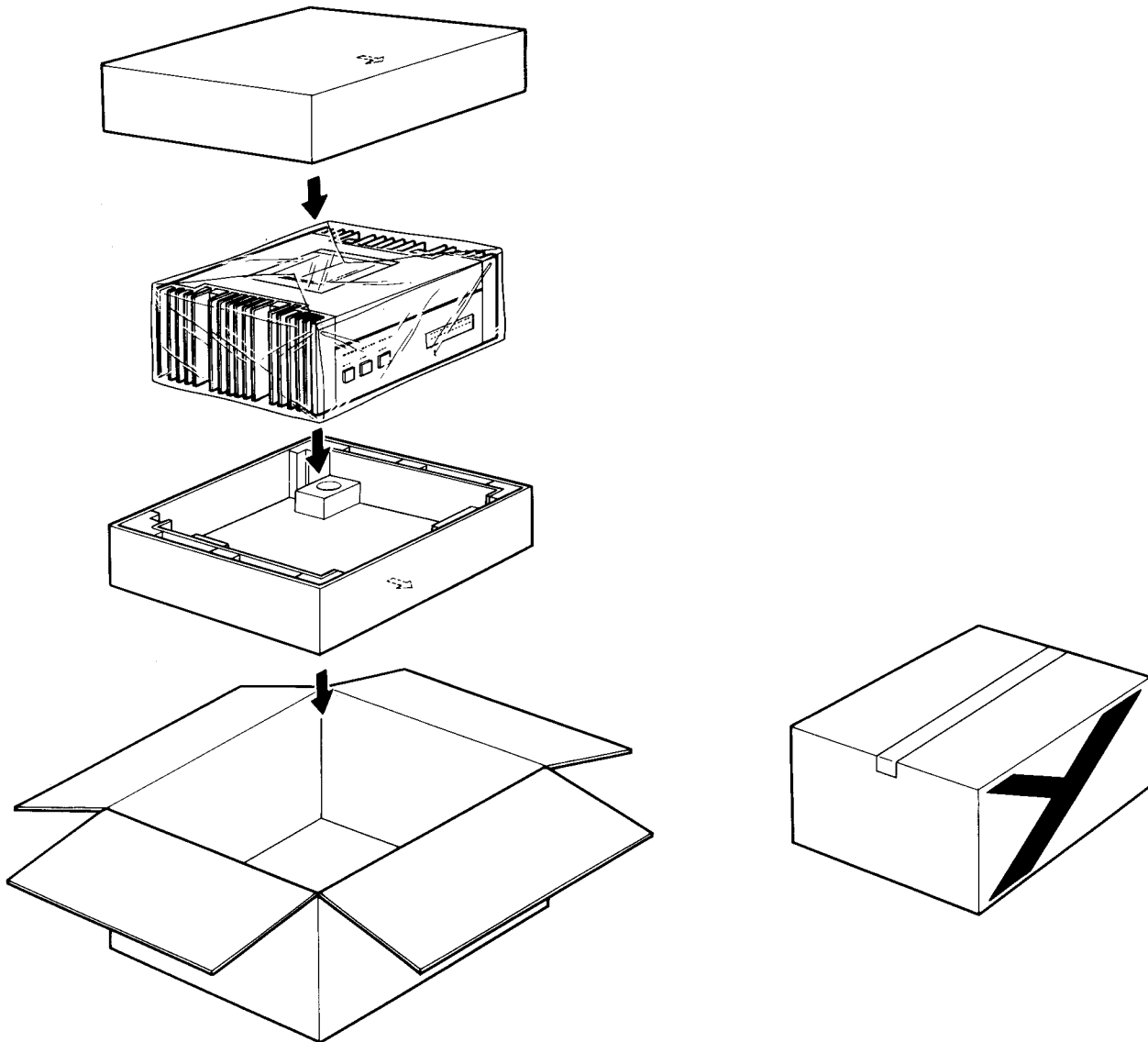
SINCE 1887  **YAMAHA**
NIPPON GAKKI CO., LTD. HAMAMATSU, JAPAN

Printed in Japan '79 APR. 2.32K M.O 

■CONTENTS

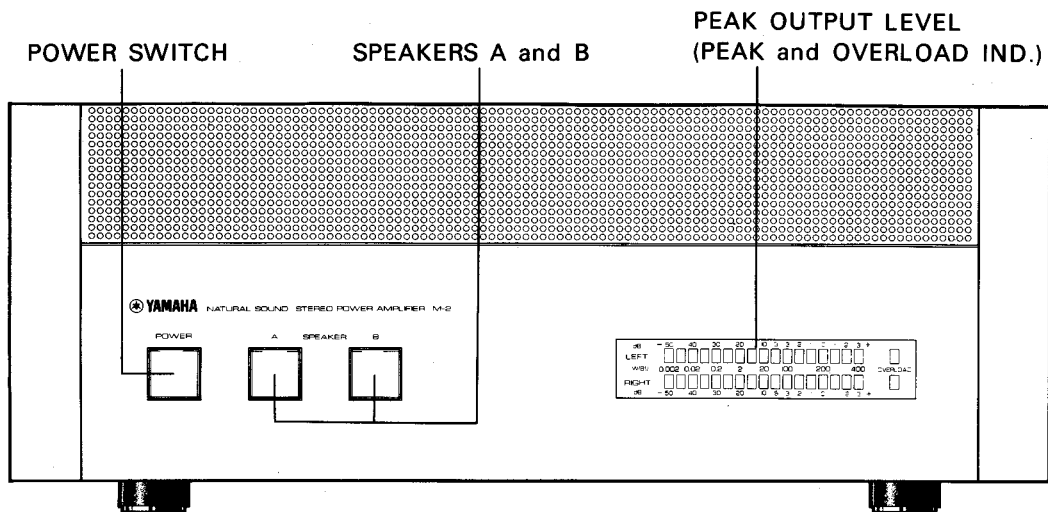
PACKAGE INSTRUCTION	2
PANEL OPERATIONS	3
SPECIFICATIONS	5
DISASSEMBLY PROCEDURES	6
ADJUSTMENT.....	8
ADJUSTING POINTS	9
BLOCK DIAGRAM.....	10
SCHEMATIC DIAGRAM	11
WIRING (P.CIRCUIT BOARD)	12
EXPLODED VIEW	13
PARTS LIST	14

■PACKAGE INSTRUCTION



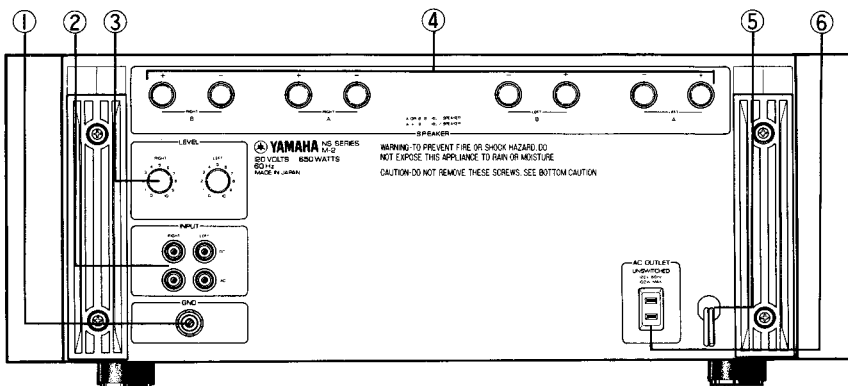
PANEL OPERATIONS

FRONT PANEL



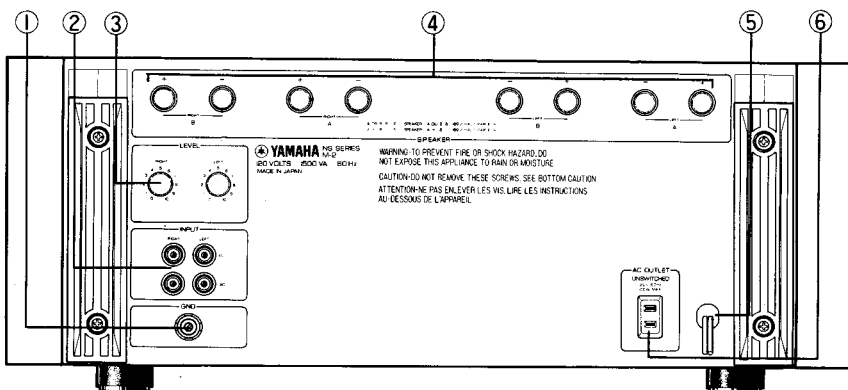
REAR PANEL

U.S.A Model



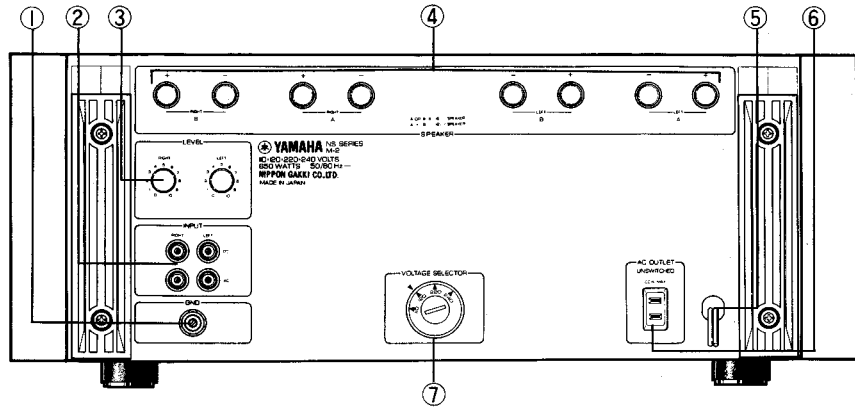
- ① GND Terminal
- ② INPUT (Pin Jack)
- ③ LEVEL (Input Level Control)
- ④ SPEAKERS
(Sp Output A and B)
- ⑤ AC Cord
- ⑥ AC OUTLET

Canadian Model



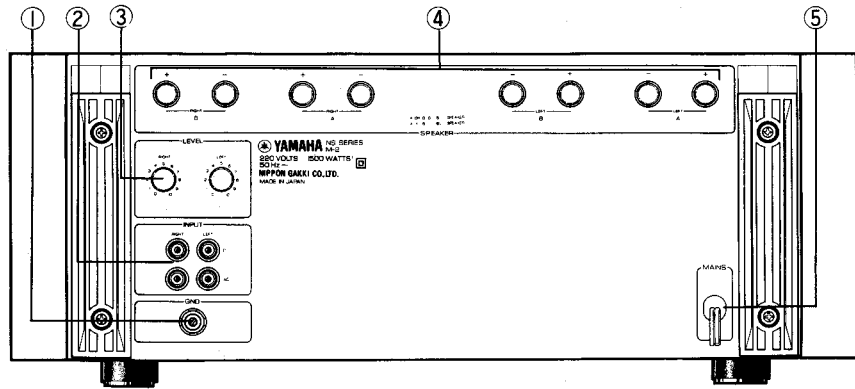
- ① GND Terminal
- ② INPUT (Pin Jack)
- ③ LEVEL (Input Level Control)
- ④ SPEAKERS
(Sp Output A and B)
- ⑤ AC Cord
- ⑥ AC OUTLET

General Model



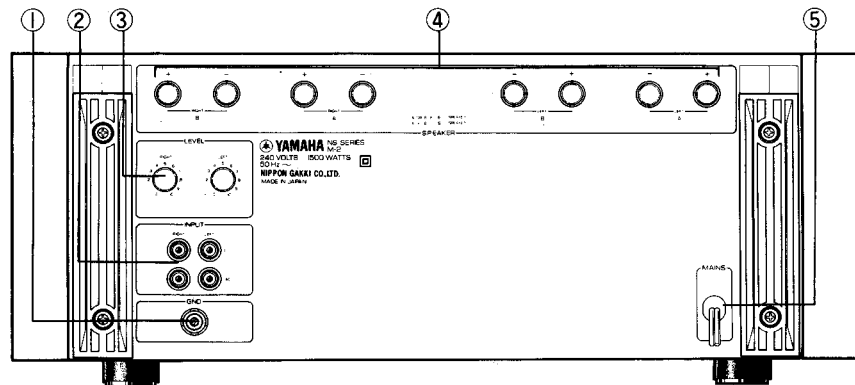
- ① GND Terminal
- ② INPUT (Pin Jack)
- ③ LEVEL (Input Level Control)
- ④ SPEAKERS
(Sp Output A and B)
- ⑤ AC Cord
- ⑥ AC OUTLET
- ⑦ VOLTAGE SELECTOR

North European Model



- ① GND Terminal
- ② INPUT (Pin Jack)
- ③ LEVEL (Input Level Control)
- ④ SPEAKERS
(Sp Output A and B)
- ⑤ AC Cord

British/Australian Models



- ① GND Terminal
- ② INPUT (Pin Jack)
- ③ LEVEL (Input Level Control)
- ④ SPEAKERS
(Sp Output A and B)
- ⑤ AC Cord

■ SPECIFICATIONS

Rated Output Power

240W+240W(8 Ω , 20Hz~
30kHz 0.005% T.H.D)
200W+200W(8 Ω , 20Hz~
30kHz 0.005% T.H.D)
(North European Model
only)

Power Band Width

10Hz~100kHz
(8 Ω , 120W, 0.01% T.H.
D)

Input Sensitivity/Impedance

1.62V(240W/8 Ω)/25k Ω
 \pm 5k Ω
1.48V(200W/8 Ω) 25k Ω
 \pm 5k Ω
(North European Model)

Frequency Response

DC Input 8 Ω , 1W
1kHz : 0dB
100kHz : -0.7 \pm 0.5dB
AC Input 8 Ω , 1W
1kHz : 0dB
10Hz : -1.5 \pm 1dB

Residual Noise

20 μ V(8 Ω , IHF-A Network,
Input VR min.)

Harmonic Distortion

Less than 0.003%
(8 Ω , 10Hz~20kHz,
120W)
Less than 0.007%
(8 Ω , 50kHz, 120W)
Less than 0.01%
(100kHz, 120W)

IM Distortion (IHF)

Less than 0.002%
(8 Ω , 50Hz:7kHz=4:1,
60W)

Channel Separation (L \rightarrow R, R \rightarrow L)

100dB(8 Ω , 1kHz, 120W)
80dB(8 Ω , 20kHz, 120W)
(VR max, Input Shorted)

Peak Indicator

Indicator Point : 0dB=200W(8 Ω , 1kHz)
Indicator Level : -50dB~+3dB(-5dB step)
Attack Time : 100 μ sec.
Release Time : 0.7 sec.(-50dB \leftrightarrow +3dB)

Overload Indicator

Indicator Level : 2% Distortion
(8 Ω , 1kHz)

Power Supply

U.S.A, Canadian
Models : 120V AC, 60Hz
General Model : 220/240V AC, 60Hz
European Model : 110/120V/220/240V AC,
50/60Hz
North European
Model : 220V AC, 50Hz
British & Australian
Model : 240V AC, 50Hz

Rated Power Consumption

U.S.A, General
Models only : 650W
Canadian Model : 1000VA
Other area Models : 1500W

AC Outlet

(U.S.A, Canadian 100W Unswitched \times 1
General Models
only)

Dimensions

W:435, H:183, D:362mm
(17-1/8") \times (7-3/16") \times
(14-5/32")

Weight

20.9kg(46 lbs)

Specifications subject to change without notice

DISASSEMBLY PROCEDURES

1. Top Cover Removal

- 1) Remove screws ① and ② in photo 1.
- 2) After removing 10 screws provided 5 each on the left and right sides, slide the top cover toward the front panel in photo 2.

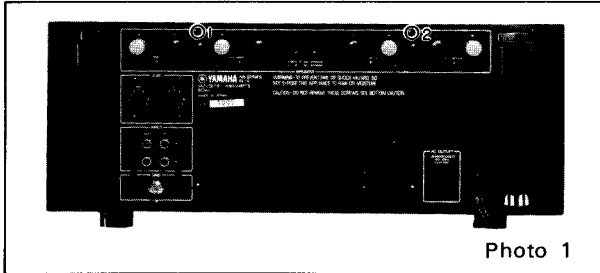


Photo 1

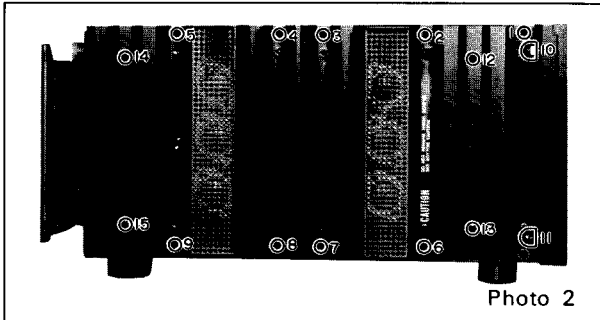


Photo 2

2. Bottom Cover Removal

- 1) Remove 8 screws provided 4 (⑥ to ⑨) each on the left and right sides in photo 2.
- 2) Remove screws ① to ⑫ in photo 3.
- 3) Remove screws ⑬ and ⑭ in photo 3.

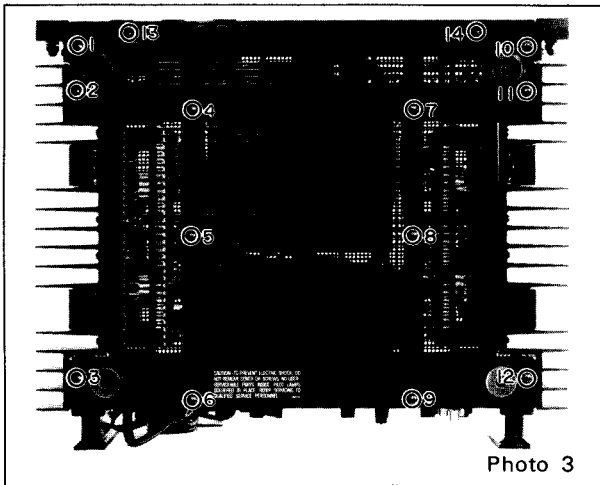


Photo 3

3. Shield Plate Removal

- 1) Remove the top and bottom cover. (Refer to step 1 and 2)
- 2) Remove screws ① to ④ in photo 4.

4. Front Panel Removal

- 1) Remove the top and bottom cover. (Refer to step 1 and 2)
- 2) Remove screws ⑤ and ⑥ in photo 4.
- 3) Remove the connector ① in photo 4.

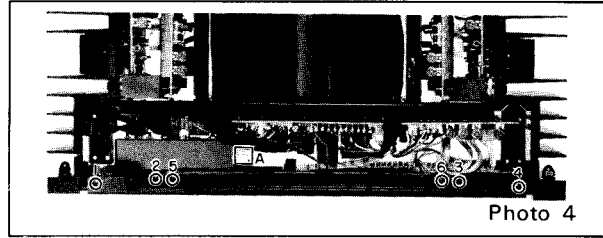


Photo 4

5. Sub Chassis Removal

- 1) Remove the top and bottom cover. (Refer to step 1 and 2)
- 2) Remove the front panel and shield plate. (Refer to step 3 and 4)
- 3) After removing 4 screws provided 2 (⑩ and ⑪) in photo 2 each on the left and right sides, remove the sub panel.
- 4) Remove screws ① to ④ and then remove the connectors ① to ③

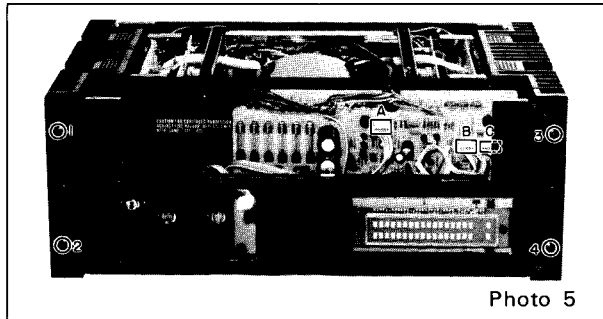


Photo 5

6. Meter Amplifier Circuit Board and LED Driver Circuit Board Removal

- 1) Same as step 1 to 5.
- 2) After removing screws ① to ⑤ in photo 6, remove the meter amplifier circuit board.
- 3) After removing screws ⑥ to ⑨ in photo 6, remove the LED driver circuit board.

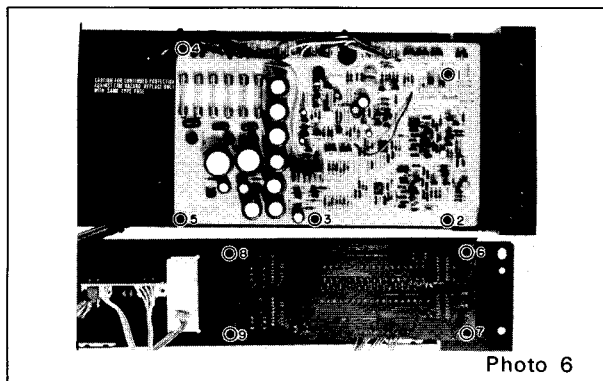


Photo 6

7. Heat Sink, Pre-driver Circuit Board and Driver Circuit Board Removal

- 1) Remove the top and bottom cover. (Refer to step 1 and 2)
- 2) Remove screws ⑫ to ⑮ in photo 2.
- 3) Rotate the heat sink by 180 degree and place it on the set. (photo 7)
- 4) After removing screws ① to ④ in photo 8, remove the pre-driver circuit board.
- 5) Remove screws ① to ④ in photo 9.
- 6) After removing screws ⑤ and ⑥ in photo 9, remove the transistor cover.

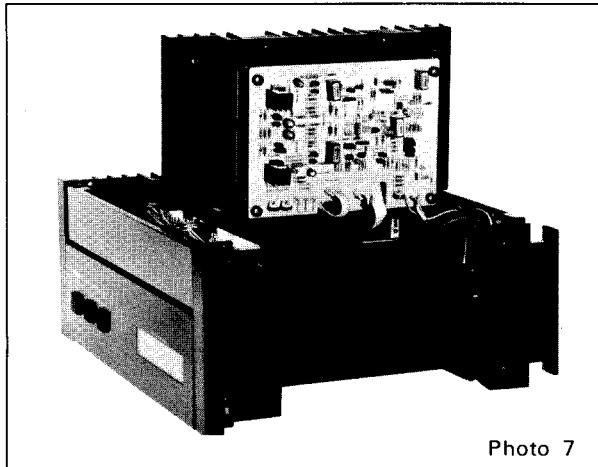


Photo 7

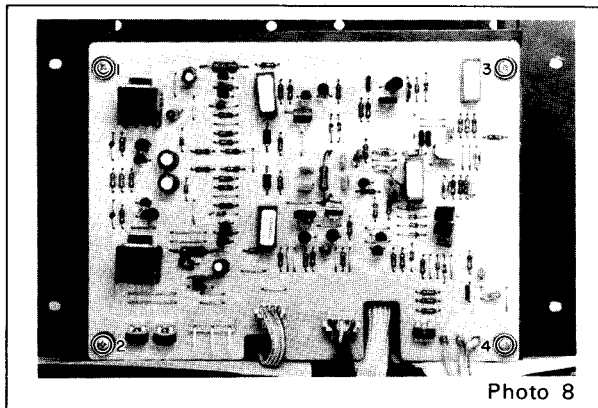


Photo 8

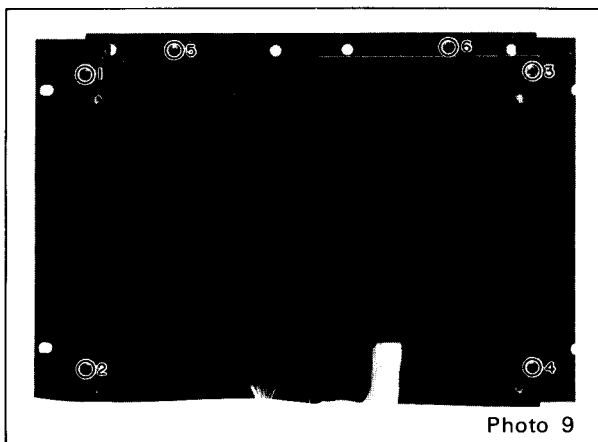


Photo 9

- 7) After removing screws ① to ⑫ in photo 10, pull out the power transistors.
- 8) After removing screws ① and ② in photo 11, remove the driver circuit board.
- 9) It is all the same to the other channel.

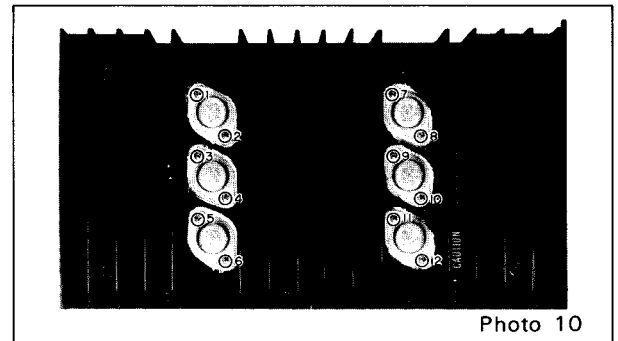


Photo 10

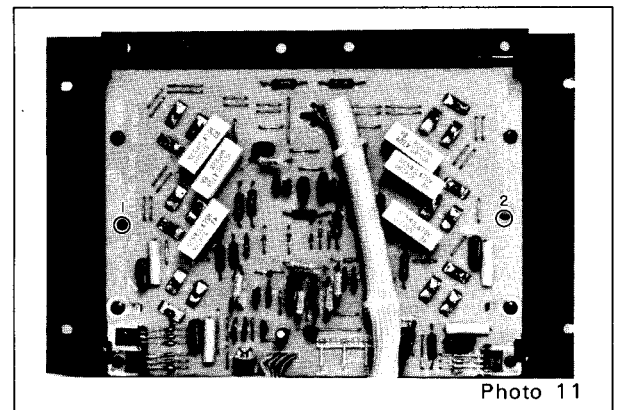


Photo 11

8. Rear Panel Removal

- 1) Remove the top and bottom cover. (Refer to step 1 and 2)
- 2) Remove 4 screws provided 2 (⑭ and ⑮) in photo 2 each on the left and right sides.
- 3) Remove screws ① to ④ in photo 12.
- 4) Remove screws ⑤ to ⑧ , ⑨ and ⑩ and detach the lead wires.

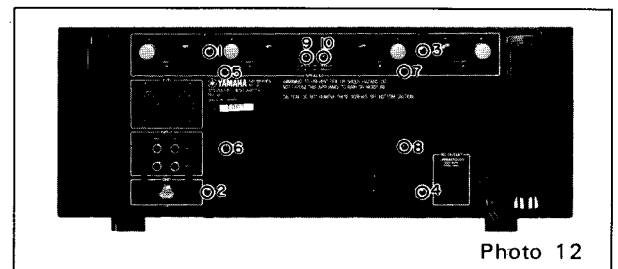


Photo 12

9. Relay Circuit Board and Input Circuit Board Removal

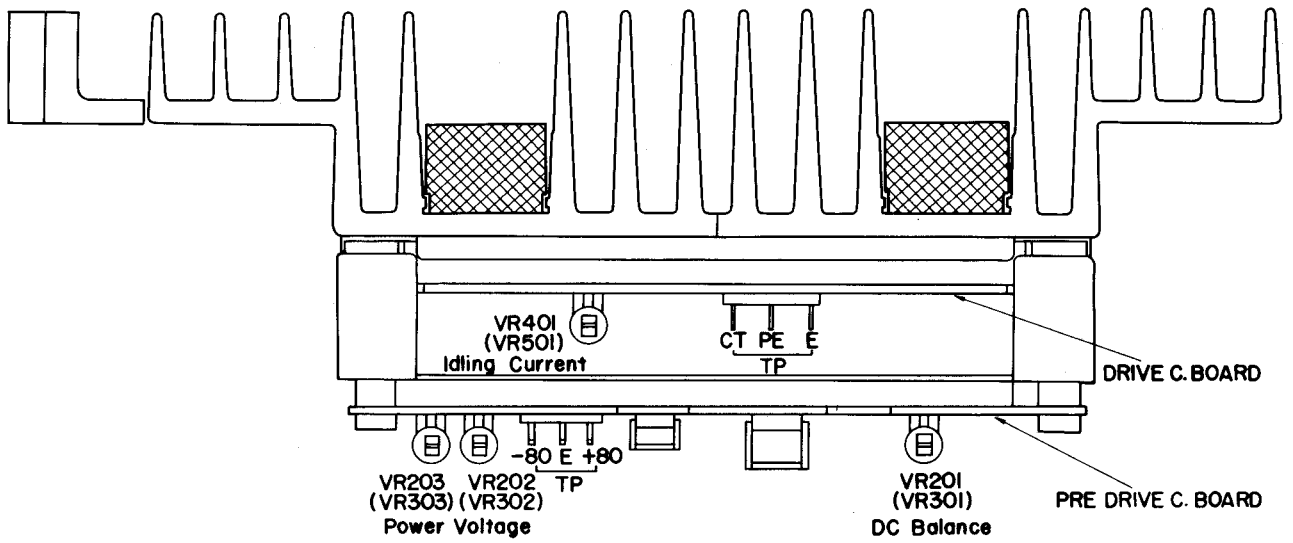
- 1) Remove the top and bottom cover. (Refer to step 1 and 2)
 - 2) Remove the rear panel. (Refer to step 8)
- * When removing the input circuit board, pull out the level control knob on rear panel.

ADJUSTMENTS

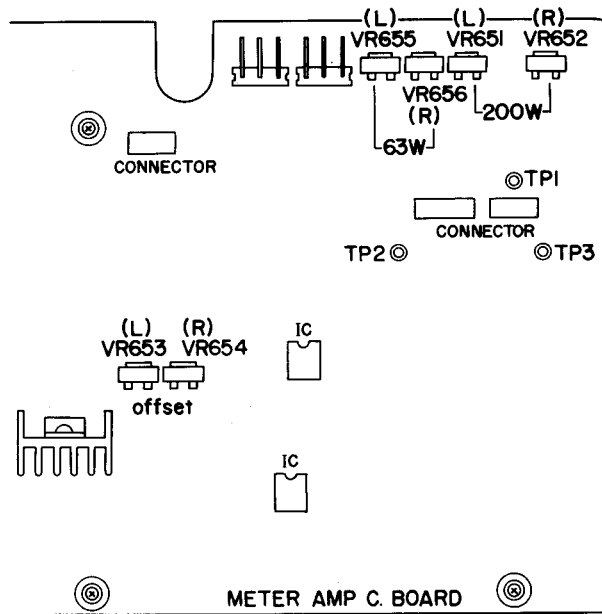
After switching on power switch, wait for a few minutes and carry out the following adjustments.

STEP	ADJUSTMENT ITEMS	ADJUSTMENT	INSTRUMENT	TERMINALS/TEST POINTS	RATING OR STANDARD
1	Power Voltage	Pre-Driver P.C.B. VR202 (L) VR203 (L) VR302 (R) VR303 (R)	Digital Multi Meter	+80 – E –80 – E	+80 ± 0.5V –80 ± 0.5V
2	Idling Current	Driver P.C.B. VR 401 (L) VR 501 (R)	–do.–	CT – PE	50 ~ 55mV
3	DC Balance	Driver P.C.B. VR201 (L) VR301 (R)	–do.–	CT – E	± 5mV
4	Level indicator offset Adjustment	Meter Amplifier P.C.B. VR653 (L) VR654 (R)	–do.–	TP1 – TP2 (L) TP3 – TP2 (R)	Adjust VR653 (L) and VR654 (R) so that the voltages between TP1–TP2 (Left, and TP3–TP2 (Right) is within 0_{-5}^{+15} mV.
	Level indicator Adjustment	Meter Amplifier P.C.B. VR655 (L) VR656 (R)	–do.–		at 1kHz, 8Ω Load and 29.26dBm (63W) indicator displays –5dB. When decreasing power by 0.5dB, confirm that indicator goes off.
		Meter Amplifier P.C.B. VR651 (L) VR652 (R)	–do.–		at 1kHz, 8Ω load and 34.26dBm (200W) indicator displays 0dB. When decreasing power by 0.5dB, confirm that indicator goes off.

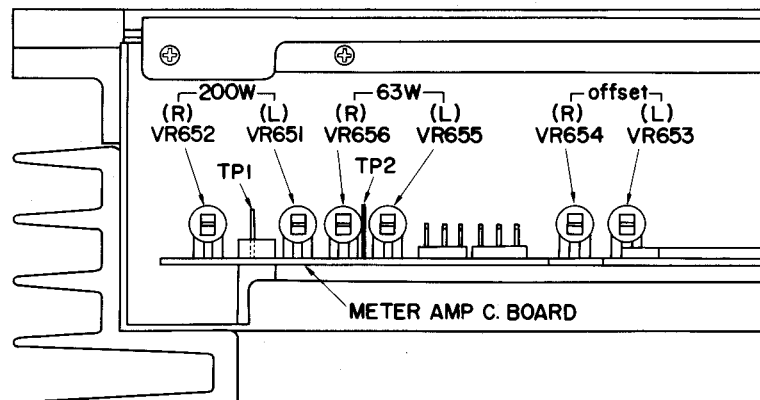
ADJUSTING POINTS



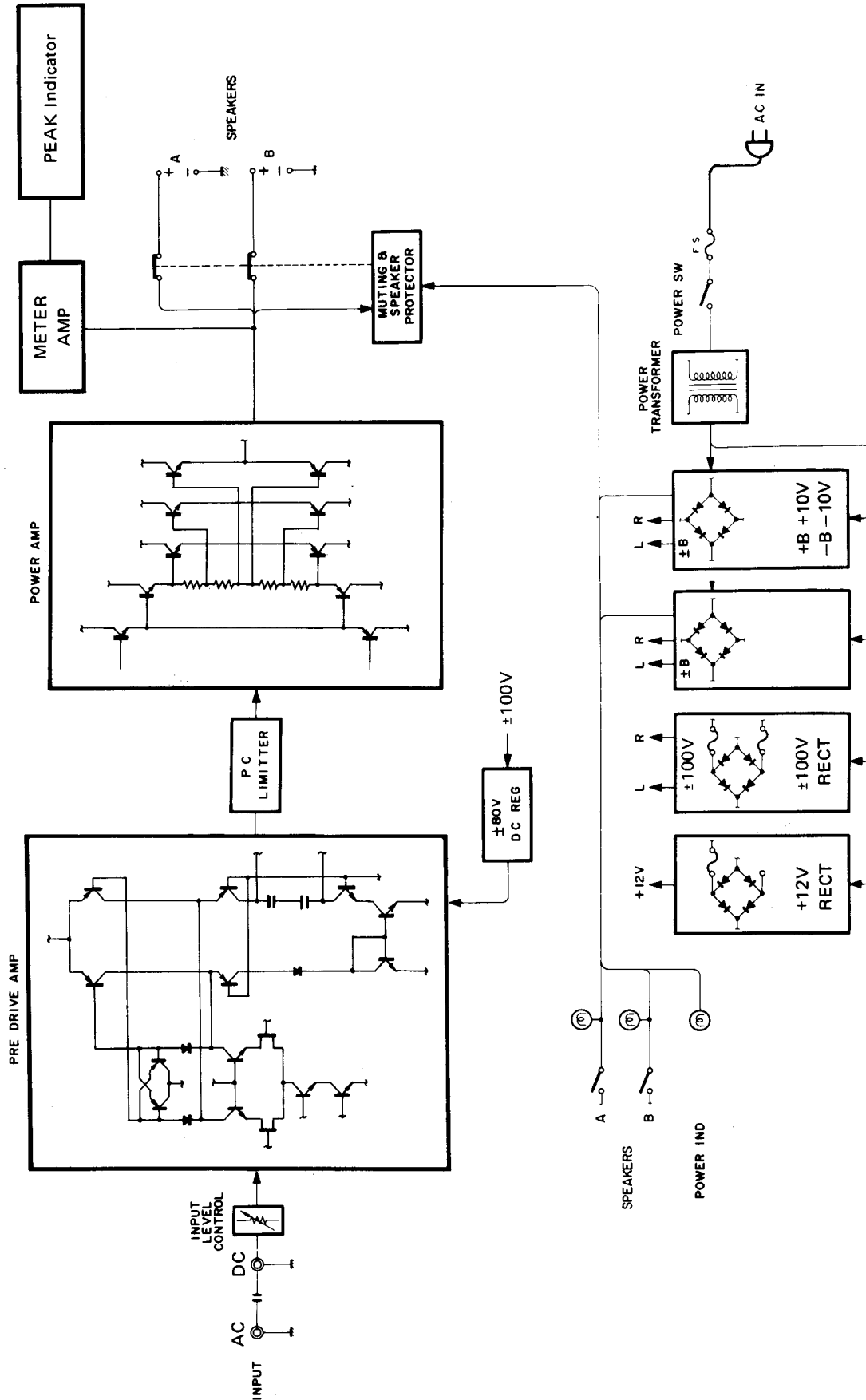
Level Indicator
Adjusting Points



Level Indicator
Adjusting Points
(Top View)



■ BLOCK DIAGRAM



A

B

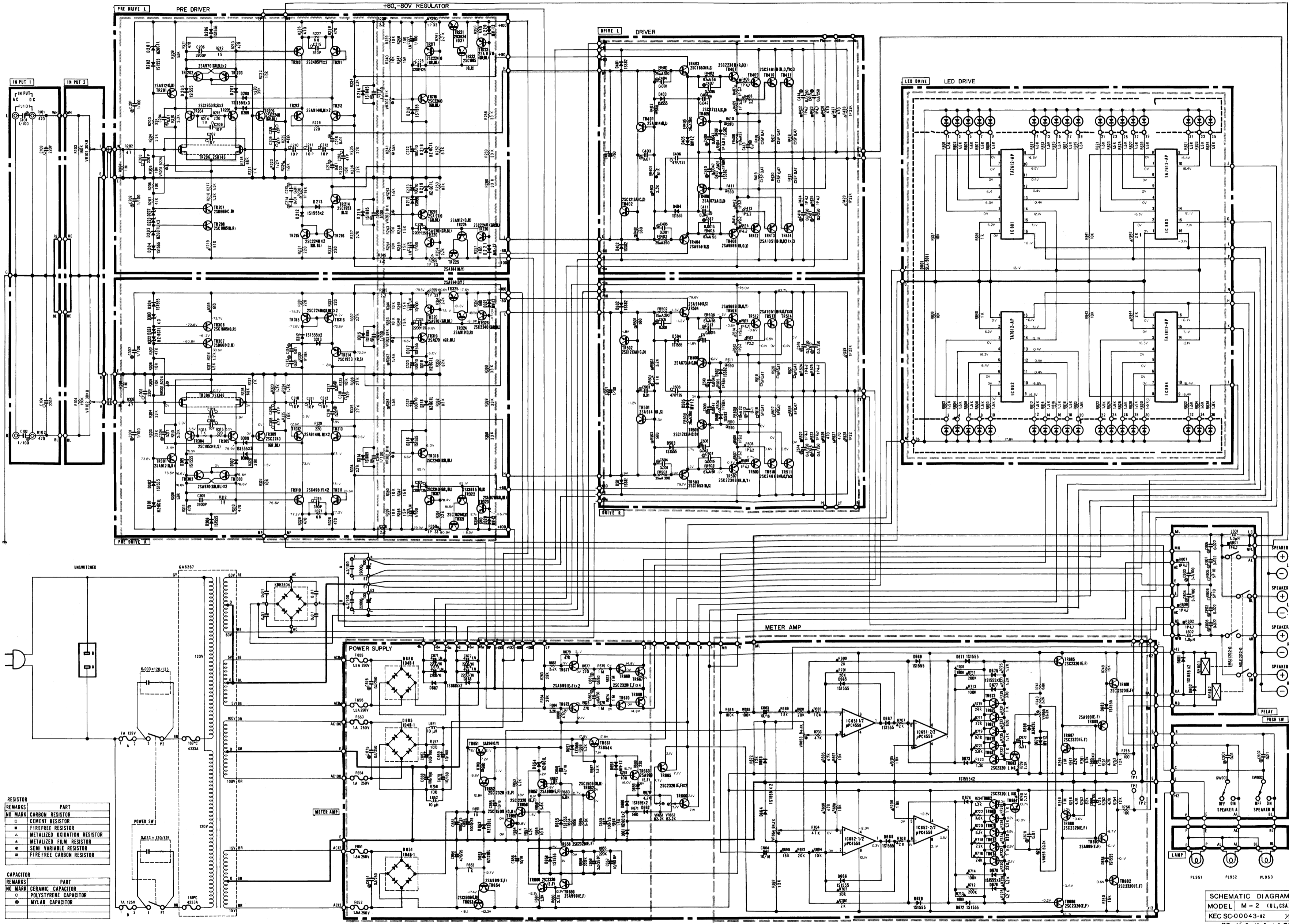
C

D

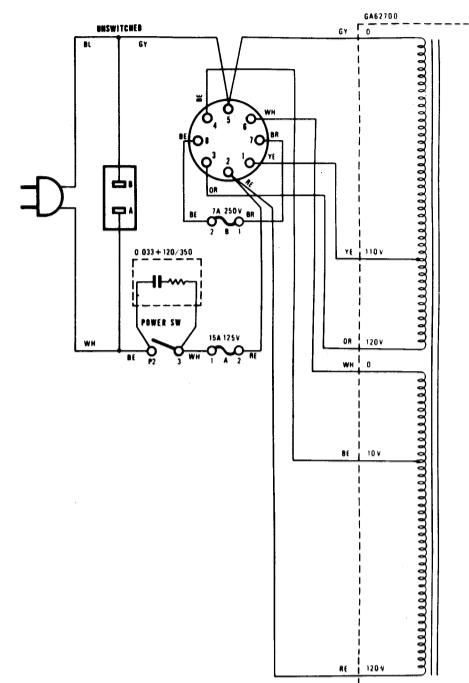
E

F

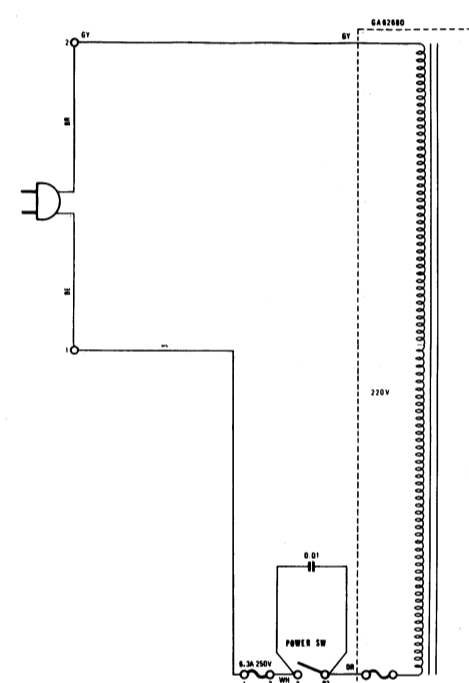
G



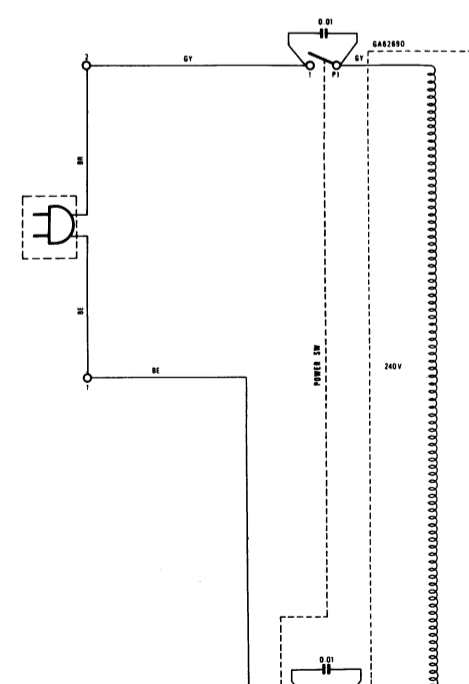
General Model



North European Model



British/Australian Models



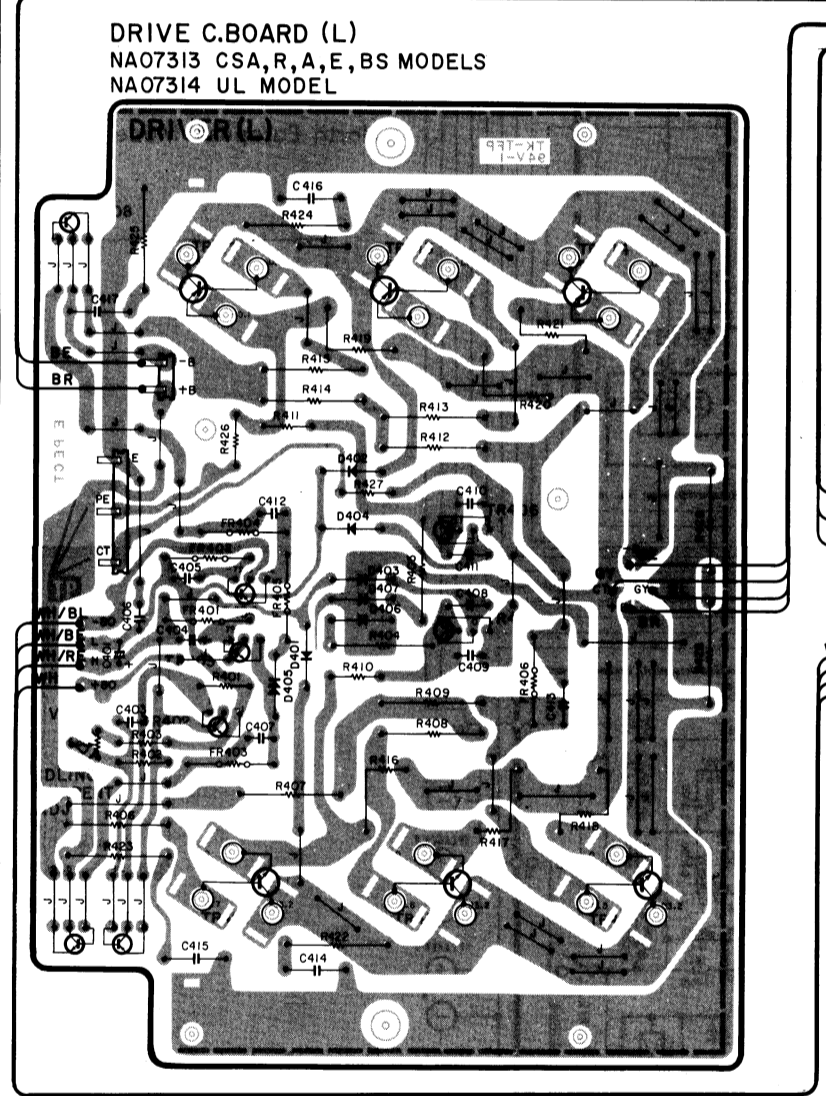
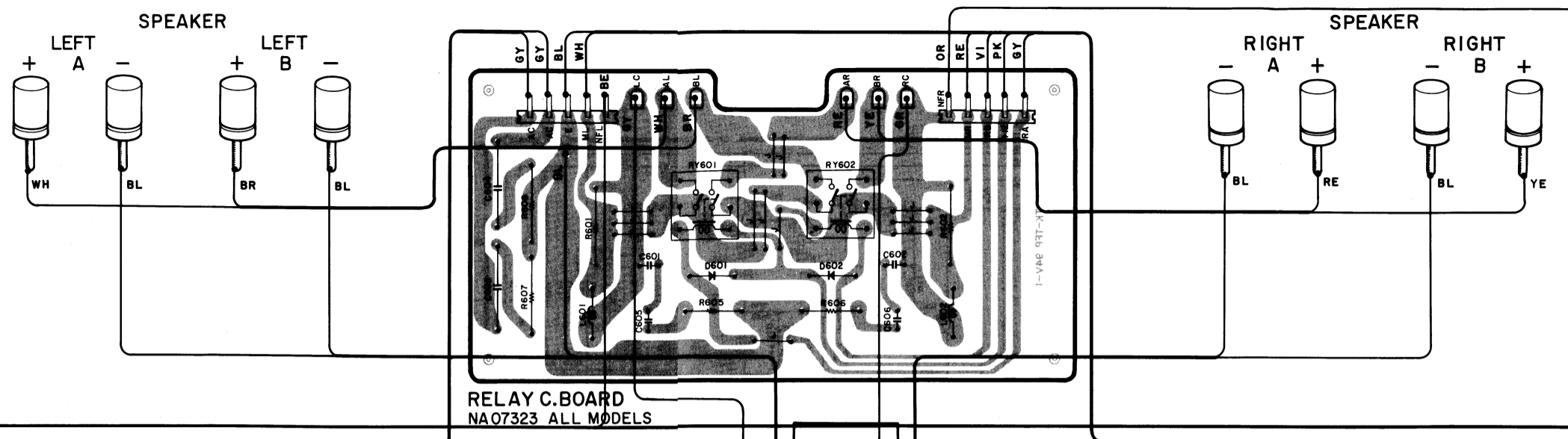
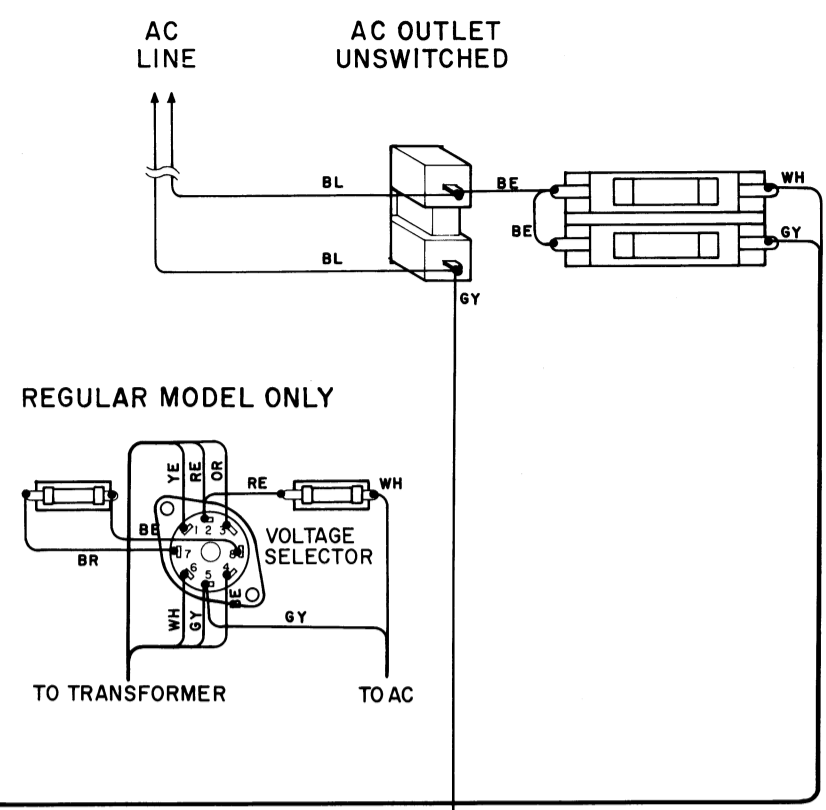
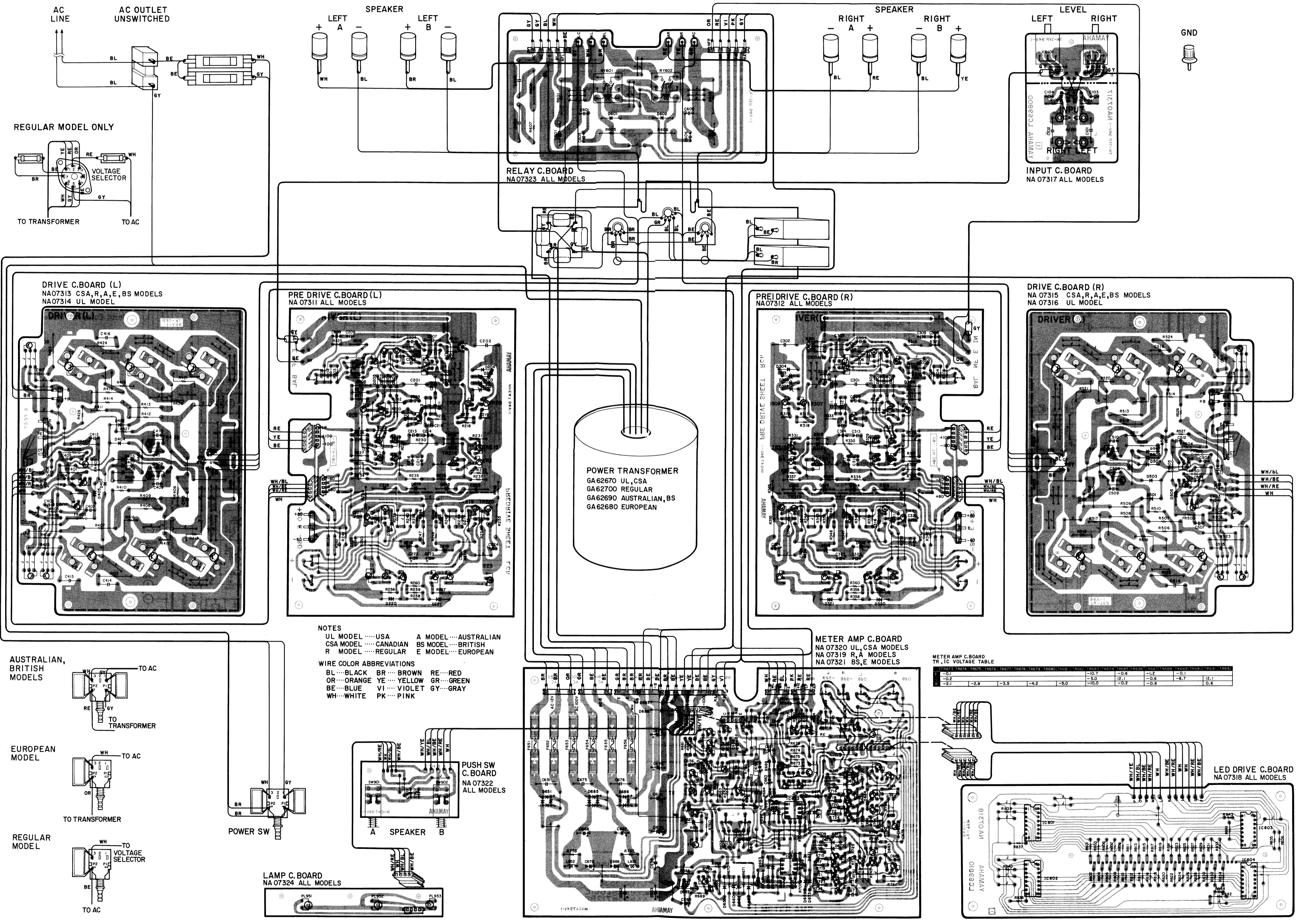
RESISTOR	
REMARKS	PART
NO MARK	CARBON RESISTOR
□	CEMENT RESISTOR
■	FIRE-RESISTANT RESISTOR
△	METALIZED OXIDATION RESISTOR
▲	METALIZED FILM RESISTOR
○	SEMI-VARIABLE RESISTOR
◊	VARIABLE RESISTOR
■	FIRE-FREE CARBON RESISTOR

CAPACITOR	
REMARKS	PART
NO MARK	CERAMIC CAPACITOR
○	POLYSTYRENE CAPACITOR
⊙	MYLAR CAPACITOR

SCHEMATIC DIAGRAM
MODEL M-2 (U.L.CSA)
KEC SC-00043-82

2SA495	2SA673 2SA912 2SA970 2SA999 2SB544	2SC1213 2SC1509 2SC1885 2SC2240 2SC2320	2SA914 2SC495 2SC1953 2SD668	2SA1051 2SC2461	2SK146	Anode Cathode ISI555 ISI885 ISS82 HZ6CIL HZ12BIL	Anode Cathode MV12	ID4B1	KBH2504	μPC4558	TA7612AP
--------	--	---	---------------------------------------	--------------------	--------	--	--------------------------	-------	---------	---------	----------

■ WIRING DIAGRAM

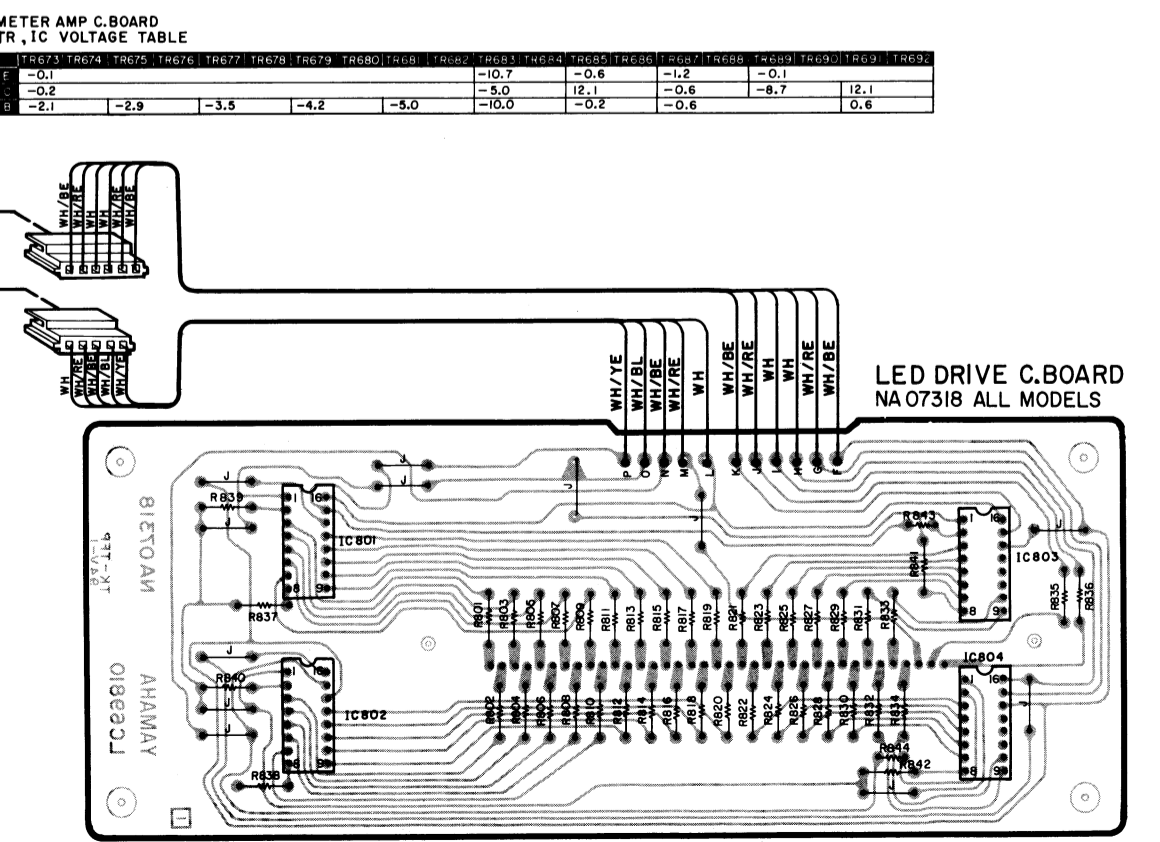
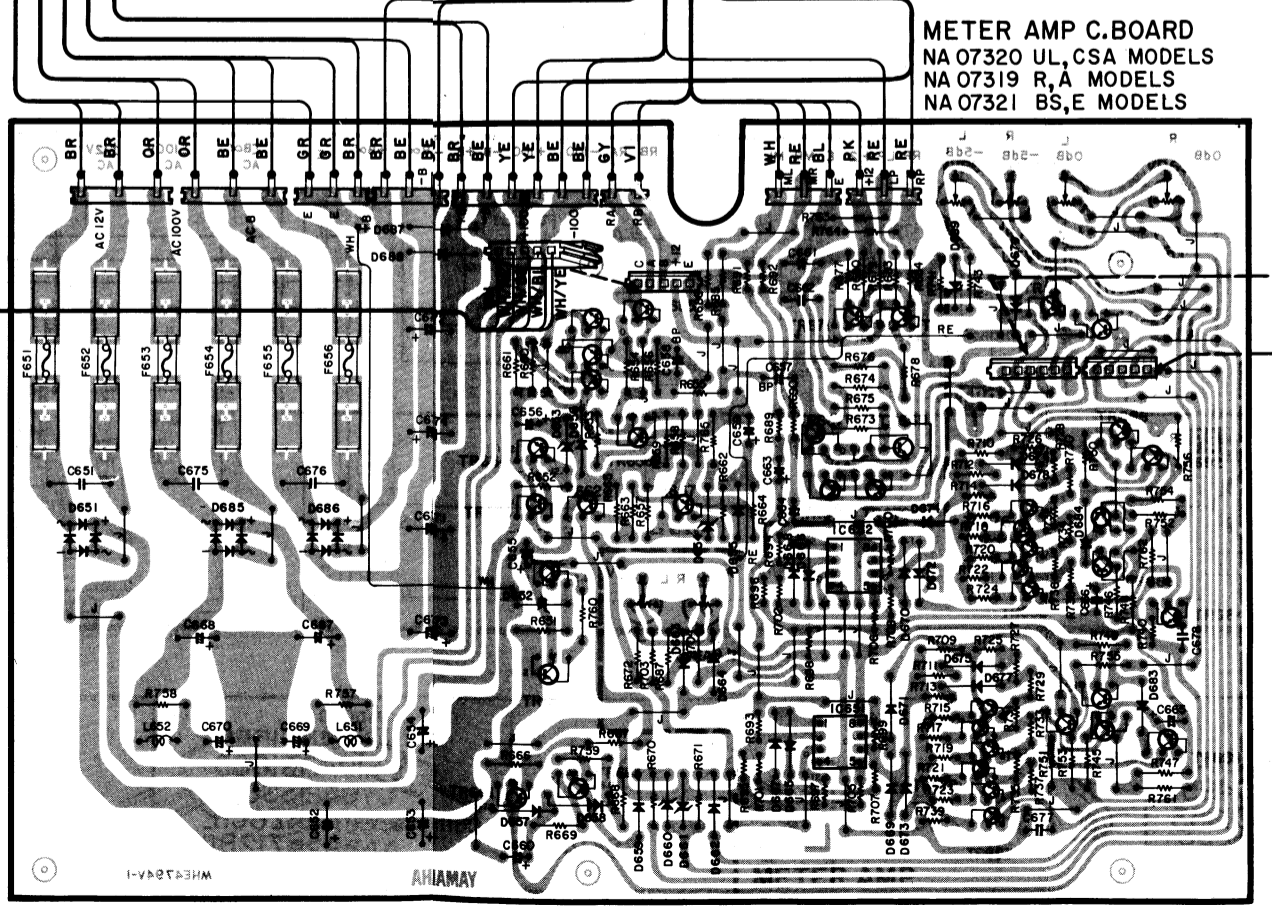
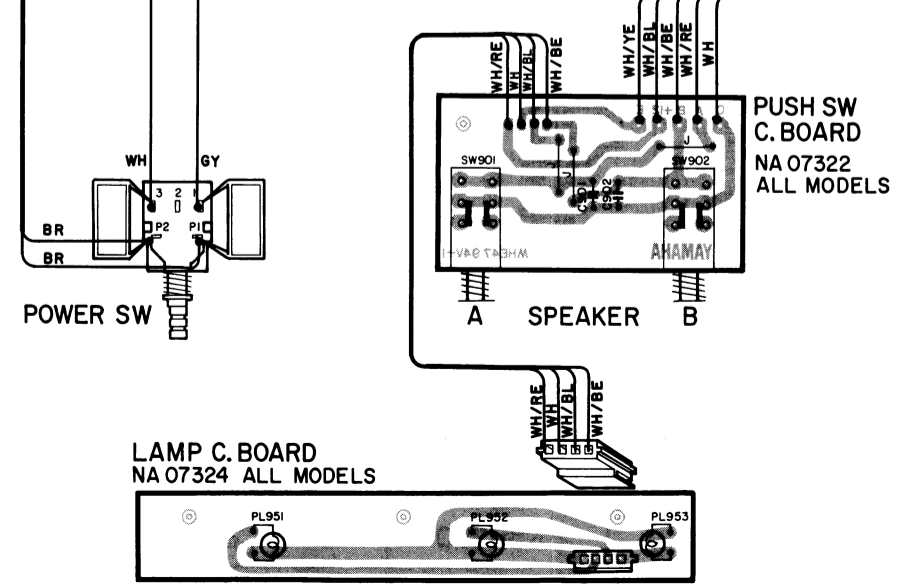
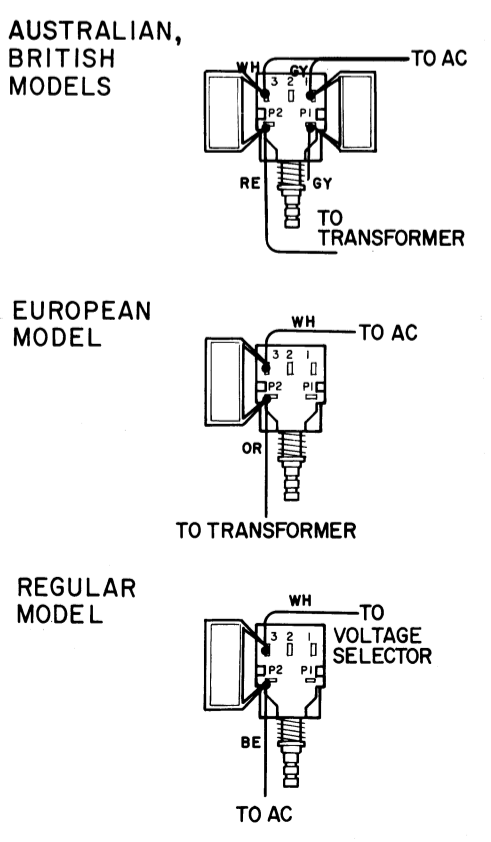


NOTES

UL MODELUSA A MODEL.....AUSTRALIAN
 CSA MODELCANADIAN BS MODEL.....BRITISH
 R MODELREGULAR E MODEL.....EUROPEAN

WIRE COLOR ABBREVIATIONS

BL.....BLACK BR.....BROWN RE.....RED
 OR.....ORANGE YE.....YELLOW GR.....GREEN
 BE.....BLUE VI.....VIOLET GY.....GRAY
 WH.....WHITE PK.....PINK



PARTS LIST

M-2

004384

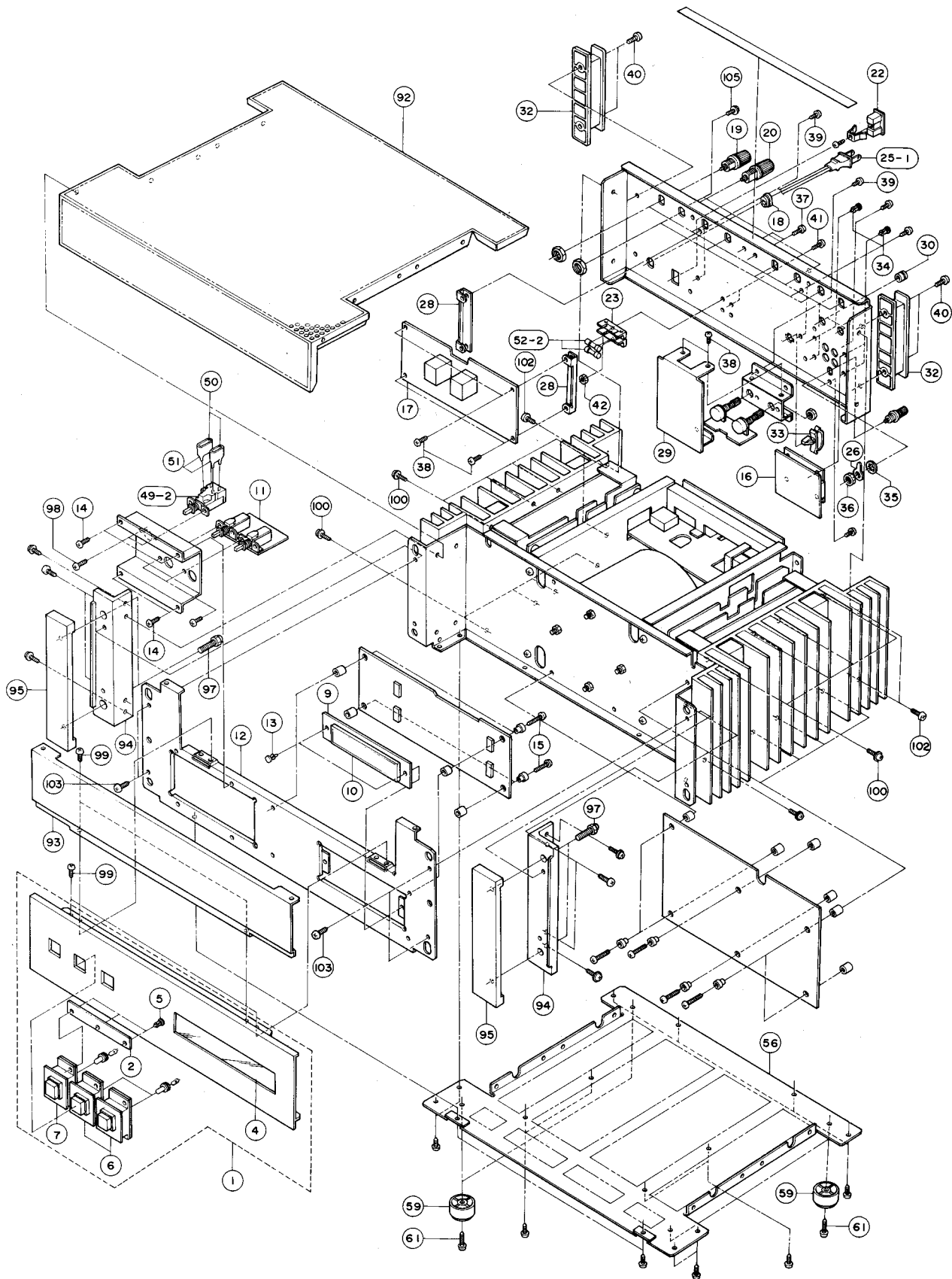
SINCE 1887

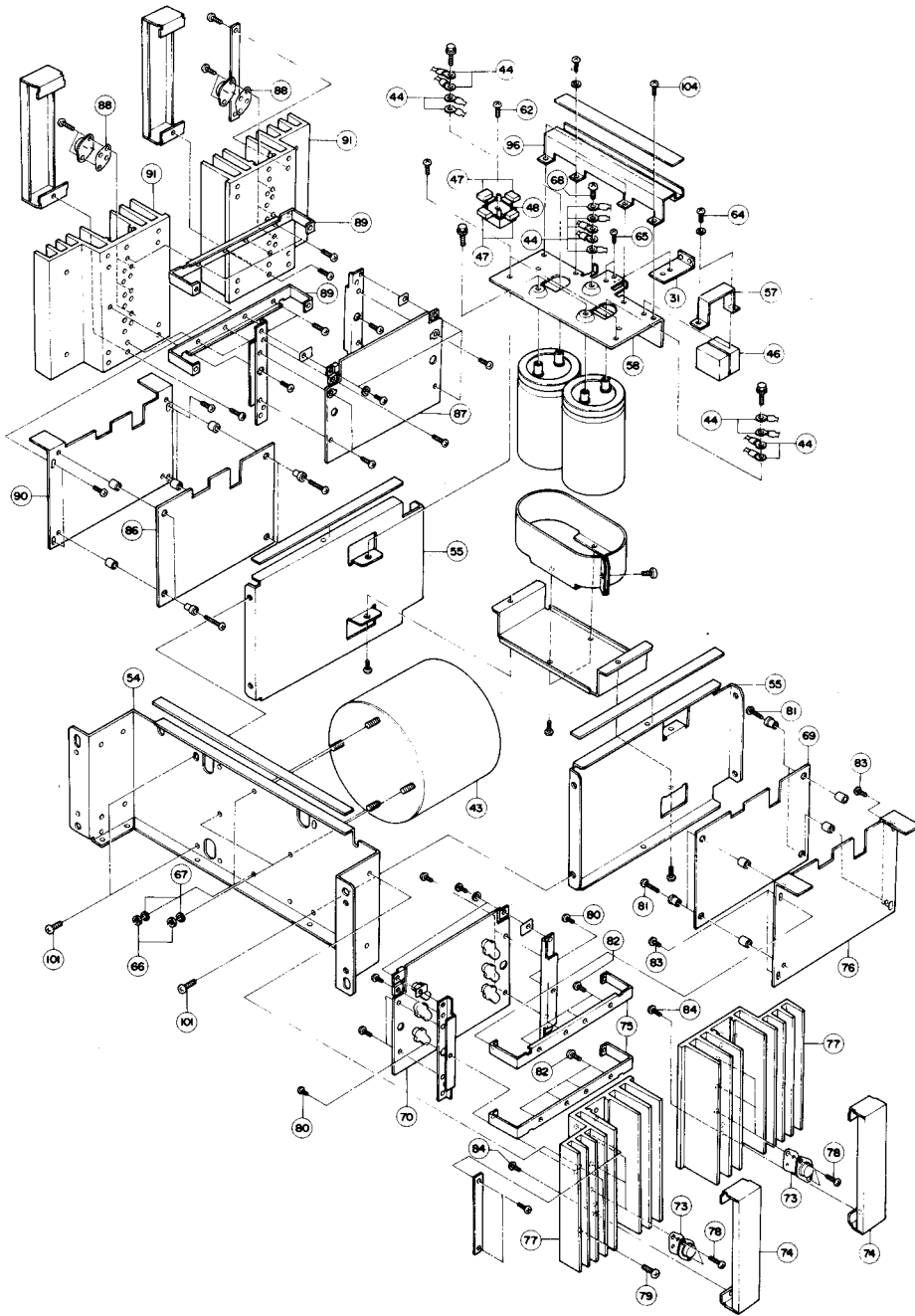


YAMAHA

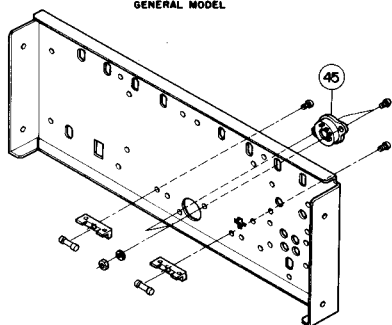
NIPPON GAKKI CO., LTD. HAMAMATSU, JAPAN

EXPLODED VIEW

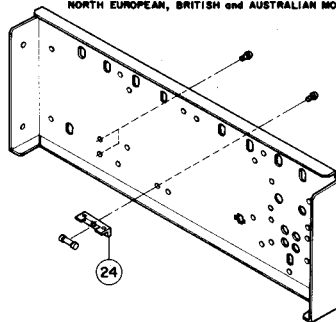




GENERAL MODEL



NORTH EUROPEAN, BRITISH and AUSTRALIAN MODELS



PARTS LIST

※ : New Parts (新製品)

Ref. No.	Part No.	Description	(部 品 名)	Markets	Remarks
※ 1	32:00:00:NB:09:17:80	Front Panel Unit	フロントパネルユニット		
※ 2	32:00:00:NA:07:32:40	Lamp Circuit Board	ランプシート		
※ 4	42:00:00:CB:09:29:60	LED Cover #9296	LEDカバー		
※ 5	42:00:00:CB:09:30:00	Nylon Rivet NRP-380	ナイロンリベット		
※ 6	32:00:00:NB:08:58:00	Push Button Assy #8580(Green)	プッシュボタンAssy		
※ 7	32:00:00:NB:08:58:10	" #8581(Orange)	"		
※ 9	32:00:00:NA:07:31:80	LED Drive Circuit Board	LEDドライブシート		
※ 10	42:00:00:IF:00:15:00	LED METER SLA-5011	LEDメータ		
※ 11	32:00:00:NA:07:32:20	Push SW Circuit Board	プッシュSWシート		
※ 12	32:00:00:AA:09:83:60	Sub Chassis #9836	サブシャーシ		
※ 13	32:00:00:CB:06:88:80	Plastic Rivet #6888	プラスチックリベット		
※ 14	42:00:00:EN:34:00:10	Bind Head Tapping Screw Type II 3×8 FCM3-B ϕ	鉄バインドタッピングネジ 2種ミソ		
※ 15	42:00:00:ED:33:01:80	Bind Head Screw Type II 3×18 FCM3-B ϕ	鉄バインド小ネジ		
※ 16	32:00:00:NA:07:31:70	Input Circuit Board	入力シート		
※ 17	32:00:00:NA:07:32:30	Relay Circuit Board	リレーシート		
※ 18	42:00:00:CB:07:27:50	Cord Stoper SR-4N-4	コードストッパー	R.U.A.G.C.B	
※ 19	42:00:00:LA:00:31:40	Speaker Terminal Screw Type Gray	スピーカターミナル		
※ 20	42:00:00:LA:00:31:50	" Black	"		
※ 21	42:00:00:LA:00:29:50	Terminal 2P	2P中継端子台	A.G.B	
※ 22	42:00:00:LB:20:07:10	AC Socket S-i6432	ACアウトレット	R.U.C	
※ 23	42:00:00:LB:20:13:40	Fuse Holder 1PFH 15A	ヒューズホルダー	R.U.A.C	
※ 24	42:00:00:LB:20:14:70	" 1PM	"	G.B	
※ 25	42:00:00:MG:00:07:80	AC Cord (Black) 2m	電源コード	R.	
※ 25-1	42:00:00:MG:00:08:90	" (") 2m	"	U.C	
※ 25-2	42:00:00:MG:00:09:10	" (") 2m	"	G	
※ 25-3	42:00:00:MG:00:09:20	" (Grey) 2.5m	"	A	
※ 25-4	32:00:00:MZ:07:28:90	AC Cord Assy for B.S	BS用電源コードAssy	B	
※ 26	42:00:00:LA:00:17:70	Earth Lug ϕ 8.2	アースラグ		
※ 27	32:00:00:AA:09:84:00	Rear Panel (R)	リヤパネル	R	
※ 27-1	32:00:00:AA:09:84:10	" (U)	"	U	
※ 27-2	32:00:00:AA:09:84:20	" (A), (B)	"	A, B	
※ 27-3	32:00:00:AA:09:84:30	" (G)	"	G	
※ 27-4	32:00:00:AA:09:84:40	" (C)	"	C	
※ 28	32:00:00:AA:09:85:90	Relay Circuit Board Holder			
※ 29	32:00:00:AA:09:85:50	Shield Board for Input	入力シールド板		
※ 30	32:00:00:BA:06:66:10	VR Knob	VRノブ		
※ 31	32:00:00:BB:06:84:00	Earth Board (B)	アース板 (B)		
※ 32	32:00:00:CB:80:66:40	Cord Reel	コードリール		
※ 33	32:00:00:CB:09:28:60	Cable Clip	ケーブルクリップ		
※ 34	42:00:00:CB:06:88:80	Plastic Rivet	プラスチックリベット		
※ 35	42:00:00:EV:41:00:80	Toothed Lock Washer	歯付座金(内歯形 8)		
※ 36	42:00:00:LA:00:16:80	Hexagonal Nut M8×0.75	六角ナット		

※ : New Parts (新製品)

Ref. No.	Part No.	Description	(部 品 名)	Markets	Remarks
37	42:00:00:EN:00:00:10	Bind Head Bonding Tapping Screw 3×8 ZMC2-Y ℓ	鉄バインドボンディング タッピンネジ		
38	42:00:00:EN:33:00:20	Bind Head Tapping Screw Type II 3×6 FCM3-B ℓ	鉄バインドタッピン ネジ 2種ミノ		
39	42:00:00:ED:33:00:60	Bind Head Screw 3×6 FCM3-B ℓ	鉄バインド小ネジ		
40	42:00:00:EN:33:00:40	Bind Head Tapping Screw Type II 4×10 FCM3-B ℓ	鉄バインドタッピンネジ 2種ミノ		
41	42:00:00:ED:33:00:80	Bind Head Screw 3×8 FCM3-B ℓ	鉄バインド小ネジ		
42	42:00:00:EV:10:03:00	Hexagonal Nut M3 ZMC2-Y	六角ナット		
※	43	42:00:00:GA:62:67:00	Power Transformer	電源トランス、トロイダル	U.C
※	43-1	42:00:00:GA:62:68:00	"	"	G
※	43-2	42:00:00:GA:62:69:00	"	"	A.B
※	43-3	42:00:00:GA:62:70:00	"	"	R
44	42:00:00:LA:00:16:40	Insulator V1.25-5	絶縁付圧着端子		
45	42:00:00:LB:20:14:80	Voltage Selector	電圧切換器	R	
46	42:00:00:FC:14:64:70	Mylar Capacitor 4.7 μ F 100V(K)	マイラーコン		
47	42:00:00:FZ:00:06:50	" 0.01 μ F 630V MMH(M)	"		
48	42:00:00:i H:00:03:90	Bridge Diode KBH2504	ダイオード・ブリッジ		
49	42:00:00:KA:80:04:90	Push SW SDG1P 125V 15A.	プッシュSW	R	
49-1	42:00:00:KA:80:05:10	" SDG5P-E 250V 5/80A	"	A.G.B	
49-2	42:00:00:KA:80:10:30	" SDG5P TV-5	"	U.C	
50	42:00:00:FZ:00:01:10	Spark Killer Capacitor 0.033+120 125V AC	スパークキラーコン	U	
"	42:00:00:FZ:00:05:40	" 0.033+120 DC500/AC350	"	R	
"	42:00:00:FZ:00:11:20	" 0.033+120 125V AC	"	C	
"	42:00:00:FZ:00:15:60	" 0.01 ECN-C4A 450V AC	"	A.G.B	
51	42:00:00:CB:07:21:90	Cover for Capacitor 820826	コンデンサーカバー	R.U	
"	42:00:00:CB:08:19:40	" SB-0632 E-A	"	C	
"	42:00:00:CB:08:86:90	" SB-0866	"	A.G.B	
52	42:00:00:KB:00:18:90	Fuse ⑤ 6.3AT 250V	ヒューズタイムラグ	G.B	
52-1	42:00:00:KB:00:13:00	" 7.0AT 250V	ヒューズタイラッシュ	R.A	
52-2	42:00:00:KB:00:15:20	" UL 7A 125V	ヒューズタイムラグ	U.C	
53	42:00:00:KB:00:12:70	Fuse 15A 125V	ヒューズ	U	
※	54	32:00:00:AA:09:83:70	Main Frame	メインフレーム	
※	55	32:00:00:AA:09:83:80	Side Frame	サイドフレーム	
※	56	32:00:00:AA:09:84:60	Bottom Cover	ボトムカバー	
※	57	32:00:00:AA:09:85:70	Capacitor Holder	コンデンサー押え金具	
58	32:00:00:BB:06:83:90	Earth Board (A)	アース板 (A)		
59	42:00:00:CB:08:77:40	Leg	脚		
60	42:00:00:CB:06:88:80	Plastic Rivet	プラスチックリベット	R	
61	42:00:00:EN:33:00:50	Bind Head Tapping Screw Type II 4×20 FCM3-B ℓ	鉄バインドタッピンネジ 2種ミノ		
62	42:00:00:EN:33:00:60	" 4×16 "	"		
63	42:00:00:EN:33:00:70	" 4×8 "	"		
64	42:00:00:EN:34:00:10	" 3×8 "	"		
65	42:00:00:EN:00:00:10	Bind Head Bonding Tapping Screw 3×8 ZMC2-B ℓ	鉄バインドボンディングネジ		
66	42:00:00:EV:10:05:00	Hexagonal Nut M5 ZMC2-Y	六角ナット		
67	42:00:00:EV:30:35:00	Spring Washer 5	バネ座金		
68	42:00:00:EN:33:00:40	Bind Head Tapping Screw Type II 4×10 FCM3-B ℓ	鉄バインドタッピンネジ 2種ミノ		
※	69	32:00:00:NA:07:31:10	Pre Drive Circuit Board (L)	ブリドライブ (L) シート	

※ : New Parts (新製品)

Ref. No.	Part No.	Description	(部 品 名)	Markets	Remarks
※ 70	32 00 00 NA 07 31 30	Drive Circuit Board (L)	ドライブシート	R.A.G.C.B	
※ "	32 00 00 NA 07 31 40	"	"	U	
※ TR412 TR414	42 00 00 i A 10 51 10	Transistor 2SA1051B R.O.Y	トランジスター		
※ TR409 TR411	42 00 00 i C 24 61 10	" 2SC2461B R.O.Y	"		
73	42 00 00 i L 00 02 30	Mica Base AC201	マイカベース		
	42 00 00 LB 60 26 70	Transistor Socket	トランジスターソケット		
74	32 00 00 NB 09 25 70	Transistor Cover Assy	トランジスターカバー Assy		
75	32 00 00 AA 09 85 10	Radiator Holder	ラジエーター固定金具		
76	32 00 00 AA 09 85 30	Shield Board (L)	シールド板(L)		
77	32 00 00 BA 07 63 40	Radiator	ラジエーター		
78	42 00 00 ED 83 01 60	Bind Head Screw (Copper) 3×16	銅バインド小ネジ		
79	42 00 00 EN 33 00 20	Bind Head Tapping Screw Type II 3×6 FCM3-B \sharp	鉄バインドタッピンネジ 2種ミソ		
80	42 00 00 EN 00 00 10	Bind Head Bonding 3×8 ZMC2-B \sharp Tapping Screw 3×8 ZMC2-B \sharp	鉄バインドボンディングタッピンネジ		
81	42 00 00 ED 33 01 60	Bind Head Screw 3×16 FCM3-B \sharp	鉄バインド小ネジ		
82	42 00 00 EN 33 00 40	Bind Head Tapping Screw Type II 4×10 FCM3-B \sharp	鉄バインドタッピンネジ 2種ミソ		
83	42 00 00 ED 34 00 10	Bind Head Screw 3×6 FCM3-B \sharp	鉄バインド小ネジ		
84	42 00 00 ED 34 01 20	Screw 4×12 FCM3-B \sharp	TRカバー取付ネジ		
85	42 00 00 EV 41 10 30	E. Ring 3 FNM3	Eリング		
※ 86	32 00 00 NA 07 31 20	Pre Drive Circuit Board (R)	ブリドライブ(R)シート		
※ 87	32 00 00 NA 07 31 50	Drive Circuit Board (R)	ドライブ(R)シート	R.A.G.C.B	
※ "	32 00 00 NA 07 31 60	"	"	U	
※ TR512 TR514	42 00 00 i A 10 51 10	Transistor 2SA1051B R.O.Y	トランジスター		
※ TR509 TR511	42 00 00 i C 24 61 10	" 2SC2461B R.O.Y	"		
88	42 00 00 i L 00 02 30	Mica Base AC201	マイカベース		
※	42 00 00 LB 60 26 70	Transistor Socket	トランジスターソケット		
89	32 00 00 AA 09 85 10	Radiator Holder	ラジエーター固定金具		
90	32 00 00 AA 09 85 40	Shield Board	シールド板(R)		
91	32 00 00 BA 07 63 40	Radiator	ラジエーター		
92	32 00 00 AA 09 84 70	Top Cover	トップカバー		
93	32 00 00 AA 09 85 00	Shield Plate	シャヘイ板		
94	32 00 00 BA 07 63 50	Side Angle	サイドアングル		
95	32 00 00 BA 07 63 60	Sub Panel	サブパネル		
96	32 00 00 BB 06 84 40	Shield Frame	シールドワク		
	42 00 00 CB 06 95 00	Cable Clip No42	ケーブルクリップ		
97	42 00 00 EZ 00 09 00	Bolt 6×16	化粧ボルト		
98	42 00 00 ED 33 00 60	Bind Head Screw 3×6 FCM3-B \sharp	鉄バインド小ネジ		
99	42 00 00 EN 34 00 10	Bind Head Tapping Screw Type II 3×8 FCM3-B \sharp	鉄バインドタッピンネジ 2種ミソ		
100	42 00 00 EK 33 00 10	B.W Bind Head Tapping Screw 3×12 FCM3-B \sharp	鉄BWタッピンネジ 2種ミソナシ		
101	42 00 00 ED 33 02 50	Bind Head Screw 3×25 FCM3-B \sharp	鉄バインド小ネジ		
102	42 00 00 EK 33 00 40	Bind Head Tapping Screw Type II 4×10 FCM3-B \sharp	鉄バインドタッピンネジ 2種ミソ		
103	42 00 00 ED 34 01 00	Bind Head Screw 4×10 FCM3-B \sharp	鉄バインド小ネジ		
104	42 00 00 EN 00 00 10	Bind Head Bonding Tapping Screw 3×8 ZMC2-B \sharp	鉄バインドボンディングタッピンネジ		
105	42 00 00 EK 33 50 10	B.W Bind Head Tapping Screw 3×6 FCM3-B \sharp	鉄BWタッピンネジ		

※ : New Parts (新製品)

Ref. No.	Part No.	Description	(部 品 名)	Markets	Remarks
	32 00 00 NA 06 31 10	Pre Drive(L) Circuit Board	ブリドライブ(L)シート		
C201 C202	42 00 00 FC 10 61 00	Mylar Capacitor 1 μ F 100V MS(K)	MMコン		
C203	42 00 00 FD 15 22 20	Polystyrene Capacitor Vert 220PF 50V(J)	スチコン タテ型		
C204	42 00 00 FA 11 41 00	Mylar Capacitor 0.01 μ F 50V MS(K)	マイラーコン		
C205	42 00 00 FD 15 33 90	Polystyrene Capacitor Vert 3900PF 50V(J)	スチコン タテ型		
C206 C207	42 00 00 FE 11 11 00	" 10PF 50V(K)	スチコン ヨコ型		
C208 C209	42 00 00 FD 15 14 70	" Vert 47PF 50V(J)	スチコン タテ型		
C210 C212	42 00 00 FE 11 11 00	" 10PF 50V(K)	スチコン ヨコ型		
C213 C214	42 00 00 FA 11 41 00	Mylar Capacitor 0.01 μ F 50V MS(K)	マイラーコン		
C215	42 00 00 FD 15 23 90	Polystyrene Capacitor Vert 390PF 50V(J)	スチコン タテ型		
C216 C217	42 00 00 FA 11 41 00	Mylar Capacitor 0.01 μ F 50V MS(K)	マイラーコン		
C218	42 00 00 FD 15 14 70	Polystyrene Capacitor Vert 47PF 50V(J)	スチコン タテ型		
C219 C220	42 00 00 FC 10 61 00	MM Capacitor 1 μ F 100V	MMコン		
※ C221	42 00 00 FV 29 61 00	Electrolytic Capacitor LN 1 μ F 100V	ケミコン タテ型		
C222 C223	42 00 00 FJ 12 81 00	" Vert 100 μ F 10V	"		
C224	42 00 00 FV 29 61 00	" LN 1 μ F 100V	"		
C225 C226	42 00 00 FF 06 22 20	Polystyrene Capacitor 220PF 125V	スチコン		
R201	42 00 00 HK 35 91 00	Carbon Resistor RD25 SM-8 1M Ω	カーボン抵抗		
R202	42 00 00 HK 35 44 70	" 47 Ω	"		
R203 R204	42 00 00 HK 35 73 30	" 33K Ω	"		
R205 R206	42 00 00 HK 35 71 00	" 10K Ω	"		
R207	42 00 00 HK 35 74 70	" 47K Ω	"		
R209	42 00 00 HK 35 65 60	" 5.6K Ω	"		
R210	42 00 00 HK 35 63 30	" 3.3K Ω	"		
R211	42 00 00 HK 35 54 70	" 470 Ω	"		
R212	42 00 00 HK 35 41 50	" 15 Ω	"		
R213	42 00 00 HK 35 54 70	" 470 Ω	"		
R214	42 00 00 HK 35 61 00	" 1K Ω	"		
R215	42 00 00 HK 35 52 20	" 220 Ω	"		
R216	42 00 00 HK 35 76 80	" 68K Ω	"		
R217	42 00 00 HK 35 61 50	" 1.5K Ω	"		
R218	42 00 00 HK 35 61 20	" 1.2K Ω	"		
R219	42 00 00 HU 07 55 10	Metal Film Resistor RE35 510 Ω	金属被膜抵抗		
R220	42 00 00 HK 35 73 90	Carbon Resistor RD25 SM-8 39K Ω	カーボン抵抗		
R221	42 00 00 HK 35 61 00	" 1K Ω	"		
R222	42 00 00 HK 35 71 00	" 10K Ω	"		
R223	42 00 00 HU 07 61 20	Metal Film Resistor RE35 1.2K Ω	"		
R224	42 00 00 HU 07 61 50	" 1.5K Ω	"		
R225	42 00 00 HU 07 71 80	" 18K Ω	"		
R226	42 00 00 HK 35 54 70	Carbon Resistor RD25 SM-8 470 Ω	"		
R227	42 00 00 HK 35 46 80	" 68 Ω	"		
R228	42 00 00 HK 35 54 70	" 470 Ω	"		
R229	42 00 00 HK 35 52 20	" 220 Ω	"		
※ R230	42 00 00 HL 51 71 80	Metal Oxide Film Resistor 1P 18K Ω	酸化抵抗		
R231 R232	42 00 00 HK 35 52 20	Carbon Resistor RD25 SM-8 220 Ω	カーボン抵抗		

※ : New Parts (新製品)

Ref. No.	Part No.	Description	(部 品 名)	Markets	Remarks
R233	42:00:00 HK 35 71 00	Carbon Resistor RD25 SM-8 10K Ω	カーボン抵抗		
R234	42:00:00 HK 35 62 70	" 2.7K Ω	"		
R235 R236	42:00:00 HK 35 72 70	" 27K Ω	"		
R237	42:00:00 HK 35 62 70	" 2.7K Ω	"		
R238	42:00:00 HK 35 32 20	" 2.2 Ω	"		
R239 R240	42:00:00 HK 35 71 00	" 10K Ω	"		
R241 R242	42:00:00 HV 35 61 50	Fire Proof Carbon Resistor RDF25 1.5K Ω	不燃化カーボン抵抗		
R243 R244	42:00:00 HK 35 71 00	Carbon Resistor RD25 SM-8 10K Ω	カーボン抵抗		
R245	42:00:00 HK 35 32 20	" 2.2 Ω	"		
R246 R249	42:00:00 HK 35 71 50	" 15K Ω	"		
R250	42:00:00 HL 31 43 30	Metal Oxide Film Resistor 1P 33 Ω	酸化抵抗		
R251	42:00:00 HK 35 62 70	Carbon Resistor RD25 SM-8 2.7K Ω	カーボン抵抗		
R252 R253	42:00:00 HK 35 78 20	" 82K Ω	"		
R254	42:00:00 HK 35 62 70	" 2.7K Ω	"		
R255	42:00:00 HL 31 43 30	Metal Oxide Film Resistor 1P 33 Ω	酸化抵抗		
R256 R257	42:00:00 HV 35 55 60	Fire Proof Carbon Resistor RDF25 560 Ω	不燃化カーボン抵抗		
R258 R260	42:00:00 HK 35 73 30	Carbon Resistor RD25 SM-8 33K Ω	カーボン抵抗		
VR201	42:00:00 HY 00 02 30	Variable Resistor CR29R B22K Ω	メタルグレースVR		
VR202 VR203	42:00:00 HY 00 02 50	" B1K Ω	"		
TR201	42:00:00 i A 09 12 10	Transistor 2SA912 Q,R	トランジスタ		
TR202 TR203	42:00:00 i A 09 70 00	" 2SA970 GR,BL	"		
TR204 TR205	42:00:00 i C 19 53 30	" 2SC1953 R,S	"		
※ TR206	42:00:00 i E 10 22 00	Dual FET 2SK146	デュアルFET		
※ TR207	42:00:00 i D 06 68 00	Transistor 2SD668 C,D	トランジスタ		
TR208	42:00:00 i C 18 85 10	" 2SC1885 Q,R	"		
TR209	42:00:00 i C 22 40 00	" 2SC2240 GR,BL	"		
TR210 TR211	42:00:00 i A 04 95 30	" 2SA495 Y	"		
TR212 TR213	42:00:00 i A 09 14 10	" 2SA914 Q,R	"		
TR214	42:00:00 i C 19 53 30	" 2SC1953 R,S	"		
TR215 TR218	42:00:00 i C 22 40 00	" 2SC2240 GR,BL	"		
TR219 TR220	42:00:00 i A 09 70 00	" 2SA970 GR,BL	"		
TR221	42:00:00 i C 16 24 50	" 2SC1624 O,Y	"		
TR222	42:00:00 i C 18 85 10	" 2SC1885 Q,R	"		
TR223	42:00:00 i A 09 70 00	" 2SA970 GR,BL	"		
TR224	42:00:00 i A 09 12 10	" 2SA912 Q,R	"		
TR225	42:00:00 i A 08 14 50	" 2SA814 O,Y	"		
TR226	42:00:00 i C 22 40 00	" 2SC2240 GR,BL	"		
※ D201	42:00:00 i F 00 15 10	Zener Diode HZ6CIL	ツェナーダイオード		
D202	42:00:00 i F 00 00 40	Diode IS1555	ダイオード		
※ D203	42:00:00 i F 00 15 10	Zener Diode HZ6CIL	ツェナーダイオード		
D204 D209	42:00:00 i F 00 00 40	Diode IS1555	ダイオード		
D212 D213	42:00:00 i F 00 00 40	" IS1555	"		
D214 D215	42:00:00 i H 00 02 40	" IS1885	"		

※ : New Parts (新製品)

Ref. No.	Part No.	Description	(部 品 名)	Markets	Remarks
D216 D217	42 00 00 F 00 00 40	Diode IS1555	ダイオード		
※ D218 D219	42 00 00 F 00 15 10	Zener Diode HZ6CIL	ツエナーダイオード		
D220 D221	42 00 00 F 00 07 70	Diode VD1212	バリスタ		
※ D222 D223	42 00 00 F 00 15 10	Zener Diode HZ6CIL	ツエナーダイオード		
	42 00 00 LA 00 24 00	L Type Wrapping Terminal 3P	L型ラッピング端子板		
	42 00 00 LA 00 03 70	Pipe Lug 2×6	パイプラグ		
	42 00 00 LB 40 05 70	Pitch Base pin 2.5 TEB4P-SHF	2.5ピッチベースピン		
	42 00 00 LB 50 02 50	" TEB5P-SHF	"		
	32 00 00 BA 07 28 30	Heat Sink	放熱板		
※	42 00 00 CB 09 28 00	Bush NB-300AB M3	ワンタッチブッシュ		
※	42 00 00 CB 09 28 10	Collar NA-307(Black) h=7.5	ワンタッチカラー		
	42 00 00 ED 33 00 60	Bind Head Screw 3×6 FCM3-B ϕ	鉄バインド小ネジ		
	32 00 00 NA 07 31 30	Drive (L) Circuit Board	ドライブ(L)シート		
C401	42 00 00 FJ 16 61 00	Electrolytic Capacitor Vert 1 μ F 50V	ケミコン タテ型		
C403	42 00 00 FA 15 41 00	Mylar Capacitor 0.01 μ F 50V MS(J)	マイラーコン		
C404 C405	42 00 00 FA 15 31 00	" 0.001 μ F 50V MS(J)	"		
C406	42 00 00 FF 06 14 70	Polystyrene Capacitor Vert 47PF 125V(M)	スチコン タテ型		
C407	42 00 00 FA 15 31 50	Mylar Capacitor 0.0015 μ F 50V MS(J)	マイラーコン		
C408	42 00 00 FA 45 44 70	" 0.047 μ F 50V (J)	"		
C409 C410	42 00 00 FA 45 34 70	" 0.0047 μ F 50V (J)	"		
C411	42 00 00 FA 45 44 70	" 0.047 μ F 50V (J)	"		
C412	42 00 00 FA 15 31 50	" 0.0015 μ F 50V MS(J)	"		
C413	42 00 00 FA 15 51 00	" 0.1 μ F 50V MS(J)	"		
C414 C417	42 00 00 FZ 00 06 80	MM Capacitor 0.1 μ F 250V	MMコン		
R401 R402	42 00 00 HV 35 55 60	Fire Proof Carbon Resistor RDF25 560 Ω	不燃化カーボン抵抗		
R403	42 00 00 HV 35 62 20	" 2.2K Ω	"		
※ R404 R405	42 00 00 HL 31 66 80	Metal Oxide Film Resistor 1P 6.8K Ω	酸化抵抗		
R406	42 00 00 HZ 00 07 10	Fire Proof Carbon Resistor 1P 4.7 Ω	不燃化カーボン抵抗		
※ R407 R409	42 00 00 HL 31 32 20	Metal Oxide Film Resistor 1P 2.2 Ω	酸化抵抗		
R410 R411	42 00 00 HV 35 53 90	Fire Proof Resistor RDF25 390 Ω	不燃化カーボン抵抗		
※ R412 R414	42 00 00 HL 31 32 20	Metal Oxide Film Resistor 1P 2.2 Ω	酸化抵抗		
R415	42 00 00 HZ 00 07 10	Fire Proof Resistor 1P 4.7 Ω	不燃性抵抗		
※ R416 R421	42 00 00 HM 65 24 70	Cement Resistor 5P 0.47 Ω	セメント抵抗		
R422 R425	42 00 00 HZ 00 07 10	Fire Proof Resistor 1P 4.7 Ω	不燃性抵抗		
R426 R427	42 00 00 HV 35 54 70	Fire Proof Carbon Resistor RDF25 470 Ω	不燃化カーボン抵抗		
※ R428 R429	42 00 00 HL 32 72 20	Metal Oxide Film Resistor 2P 22K Ω	酸化抵抗		
※ FR401 FR402	42 00 00 HW 89 53 90	Fuse Resistor 25mA 390 Ω	ヒューズ抵抗	R.A.G.C.B	
※	42 00 00 HW 99 53 90	" "	"	U	
※ FR403 FR404	42 00 00 HW 89 45 60	" 67mA 56 Ω	"	R.A.G.C.B	
※	42 00 00 HW 99 45 60	" "	"	U	
※ FR405	42 00 00 HW 89 53 90	" 25mA 390 Ω	"	R.A.G.C.B	
※	42 00 00 HW 99 53 90	" "	"	U	
※ FR406	42 00 00 HW 89 42 20	" 110mA 22 Ω	"	R.A.G.C.B	
※	42 00 00 HW 99 42 20	" "	"	U	

※ : New Parts (新製品)

Ref. No.	Part No.	Description	(部 品 名)	Markets	Remarks
VR401	42 00 00 HY 00 02 50	Variable Resistor CR29R 1KB	メタルグレースVR		
TR401	42 00 00 i A 09 14 30	Transistor 2SA914 R.S	トランジスタ		
TR402	42 00 00 i C 12 13 30	" 2SC1213A C.D	"		
TR403	42 00 00 i C 19 53 30	" 2SC1953 R.S	"		
TR404	42 00 00 i A 09 14 30	" 2SA914 R.S	"		
TR405	42 00 00 i C 12 13 30	" 2SC1213A C.D	"		
TR406	42 00 00 i A 06 73 10	" 2SA673A C.D	"		
※ TR407	42 00 00 i C 22 38 20	" 2SC2238B R.O.Y	"		
※ TR408	42 00 00 i A 09 68 20	" 2SA968B R.O.Y	"		
D401 D402	42 00 00 i F 00 14 00	Diode ISS82	ダイオード		
D403 D404	42 00 00 i F 00 00 40	" IS1555	"		
D405	42 00 00 i F 00 07 70	" VD1212	バリスタ		
D406 D407	42 00 00 i F 00 14 00	" ISS82	ダイオード		
	42 00 00 BB 00 44 30	Contact SHF-001T-08CS	コンタクト		
	42 00 00 LB 40 05 60	Housing H4P-SHF			
	42 00 00 Mi 06 77 10	Ribbon Wire UL2468 4P $t=100$	リボンワイヤー		
	42 00 00 LA 00 28 70	Eyelet For Power TR	パワートランジスター用ハトメ		
	42 00 00 LA 00 24 20	Wrapping Pin L Type P=10 3P	L型ラッピング端子板		
	32 00 00 BB 06 62 90	Earth Washer	アースワッシャー		
	42 00 00 i L 00 02 70	Mica Base AC229	マイカーベース		
	32 00 00 CB 07 28 80	Bush	絶縁ブッシュ		
	42 00 00 EN 30 00 10	Bind Head Bonding Tapping Screw 3×8 ZMC2-B t	ボンディングタッピングネジ		
	42 00 00 LA 00 23 50	Wrapping L Type P=5 2P	L型ラッピング端子板		
※	32 00 00 CB 09 29 90	Wire Clip No.245	ワイヤークリップ		
	42 00 00 ED 32 60 60	Bind Head Screw 2.6×6 FCM3-B t	鉄バインド小ネジ		
	42 00 00 ED 33 00 60	" 3×6 "	"		
	32 00 00 NA 07 31 70	Input Circuit Board	入力シート		
C101 C102	42 00 00 FC 10 61 00	MM Capacitor 1 μ F 100V	MMコン		
C103 C104	42 00 00 FD 15 22 20	Polystyrene Capacitor Vert 220PF 50V(J)	スチコン タテ型		
R101 R102	42 00 00 HK 35 54 70	Carbon Resistor RD25, SM-8 470 Ω	カーボン抵抗		
R103 R104	42 00 00 HK 35 81 50	" 150K Ω	"		
VR101 VR102	42 00 00 HS 41 08 40	Variable Resistor 30KB	VR		
PJ101	42 00 00 LB 40 05 50	Pin Jack	ピンジャック		
	42 00 00 ED 33 00 60	Bind Head Screw 3×6 FCM3-B t	鉄バインド小ネジ		
	32 00 00 NA 07 31 80	LED Drive Circuit	LEDドライブシート		
R801 R834	42 00 00 HK 35 61 50	Carbon Resistor RD25, SM-8 1.5K Ω	カーボン抵抗		
R835 R836	42 00 00 HK 35 61 80	" 1.8K Ω	"		
R837 R838	42 00 00 HK 35 71 00	" 10K Ω	"		
R839 R840	42 00 00 HK 35 61 00	" 1K Ω	"		
R841 R842	42 00 00 HK 35 71 00	" 10K Ω	"		
R843 R844	42 00 00 HU 07 62 00	Metal Film Resistor RE35 2K Ω	金属被膜抵抗		
IC801 IC804	42 00 00 i G 03 06 00	IC TA7612AP	IC		
	42 00 00 BB 00 44 30	Contact SHF-001T-08CS	コンタクト		

※ : New Parts (新製品)

Ref. No.	Part No.	Description	(部 品 名)	Markets	Remarks
	42 00 00 LB 50 02 40	Housing H5P-SHF	2.5ピッチハウジング		
	42 00 00 LB 60 28 10	" H6R-SHF	"		
※	42 00 00 Mi 06 74 20	Ribbon Wire UL2468 3P $\ell=150$	リボンワイヤー		
	42 00 00 Mi 06 80 20	" " 5P $\ell=150$	"		
※	42 00 00 CB 09 28 00	Bush NB-300B M3	ワンタッチブッシュ		
※	42 00 00 CB 09 28 20	Collar NA-310(Black) h=10	ワンタッチカラー		
	32 00 00 NA 07 31 90	Meter Amp Circuit Board	メーターアンプシート		
	C651 42 00 00 FZ 00 06 80	MM Capacitor 0.1 μ F 250V	MMコン		
	C652 C653 42 00 00 FJ 24 91 00	Electrolytic Capacitor Vert 1000 μ F 25V	ケミコン タテ型		
	C654 42 00 00 FJ 24 84 70	" 470 μ F 25V	"		
	C655 C656 42 00 00 FJ 33 71 00	" 10 μ F 16V	"		
	C657 42 00 00 FM 11 71 00	B.P Capacitor 10 μ F 50V	B.Pコン		
	C658 42 00 00 FM 22 62 20	" 2.2 μ F 25V	"		
	C659 42 00 00 FJ 33 74 70	Electrolytic Capacitor 47 μ F 16V	ケミコン タテ型		
	C660 42 00 00 FJ 24 81 00	" 100 μ F 25V	"		
	C661 C662 42 00 00 FA 11 51 00	Mylar Capacitor 0.1 μ F 50V MS(K)	マイラーコン		
	C663 C664 42 00 00 FJ 33 71 00	Electrolytic Capacitor Vert 10 μ F 16V	ケミコン タテ型		
	C665 C666 42 00 00 FJ 54 61 00	" KU 1 μ F 25V	"		
	C667 C668 42 00 00 FJ 20 81 00	" 100 μ F 160V	"		
※	C669 C670 42 00 00 FJ 20 71 00	" 10 μ F 160V	"		
※	C671 C674 42 00 00 FV 23 92 20	" LN 2200 μ F 16V	"		
	C675 C676 42 00 00 FZ 00 06 80	MM Capacitor 0.1 μ F 250V	MMコン		
	C677 C678 42 00 00 FA 11 41 00	Mylar Capacitor 0.01 μ F 50V MS(K)	マイラーコン		
	L651 L652 42 00 00 GE 30 01 30	RF Inductor 10 μ F	RFインダクター		
	R651 R652 42 00 00 HK 35 61 00	Carbon Resistor RD25 SM-8 1K Ω	カーボン抵抗		
	R653 42 00 00 HK 35 61 20	" 1.2K Ω	"		
	R654 42 00 00 HK 35 61 00	" 1K Ω	"		
	R655 R656 42 00 00 HK 35 82 20	" 220K Ω	"		
	R657 42 00 00 HK 35 61 20	" 1.2K Ω	"		
	R658 42 00 00 HK 35 65 60	" 5.6K Ω	"		
	R659 42 00 00 HK 35 71 00	" 10K Ω	"		
	R660 R661 42 00 00 HK 35 63 30	" 3.3K Ω	"		
	R662 42 00 00 HK 35 71 00	" 10K Ω	"		
	R663 42 00 00 HK 35 65 60	" 5.6K Ω	"		
	R664 42 00 00 HK 35 81 00	" 100K Ω	"		
	R665 42 00 00 HK 35 65 60	" 5.6K Ω	"		
	R666 R667 42 00 00 HK 35 61 20	" 1.2K Ω	"		
	R668 42 00 00 HK 35 71 50	" 15K Ω	"		
	R669 42 00 00 HK 35 52 20	" 220 Ω	"		
	R670 42 00 00 HK 35 64 70	" 4.7K Ω	"		
	R671 42 00 00 HK 35 55 60	" 560 Ω	"		
	R672 42 00 00 HK 35 71 20	" 12K Ω	"		
	R673 R676 42 00 00 HK 35 91 00	" 1M Ω	"		
	R677 R678 42 00 00 HK 35 52 70	" 270 Ω	"		

※ : New Parts (新製品)

Ref. No.	Part No.	Description	(部 品 名)	Markets	Remarks
R679 R680	42 00 00 HK 35 54 70	Carbon Resistor RD25 SM-8 470Ω	カーボン抵抗		
R683 R684	42 00 00 HK 35 62 20	" 2.2KΩ	"		
R685 R686	42 00 00 HK 35 81 00	" 100KΩ	"		
R687	42 00 00 HK 35 71 20	" 12KΩ	"		
R689 R690	42 00 00 HK 07 71 80	Metal Film Resistor RE35 18KΩ	金属被膜抵抗		
R691 R692	42 00 00 HU 07 72 00	" 20KΩ	"		
R693 R694	42 00 00 HU 07 71 00	" 10KΩ	"		
R695 R696	42 00 00 HU 07 74 70	" 47KΩ	"		
R697 R698	42 00 00 HU 07 71 00	" 10KΩ	"		
R699 R700	42 00 00 HU 07 62 00	" 2KΩ	"		
R701 R702	42 00 00 HU 07 72 00	" 20KΩ	"		
R703 R704	42 00 00 HK 35 74 70	Carbon Resistor RD25 SM-8 47KΩ	カーボン抵抗		
R705 R706	42 00 00 HU 07 61 80	Metal Film Resistor RE35 1.8KΩ	金属被膜抵抗		
R707 R708	42 00 00 HU 07 62 00	" 2KΩ	"		
R709 R710	42 00 00 HU 87 71 80	" RP-42A(F) 180KΩ	"		
※ R711 R712	42 00 00 HU 87 72 00	" " 200KΩ	"		
R713 R714	42 00 00 HU 07 81 00	" 100KΩ	"		
R715 R716	42 00 00 HU 07 72 40	" 24KΩ	"		
R717 R718	42 00 00 HU 07 72 20	Metal Film Resistor RE35 22KΩ	"		
R719 R720	42 00 00 HU 07 69 10	" 9.1KΩ	"		
R721 R722	42 00 00 HU 07 63 60	" 3.6KΩ	"		
R723 R724	42 00 00 HU 07 61 30	" 1.3KΩ	"		
R725 R726	42 00 00 HU 07 62 20	" 1.2KΩ	"		
R729 R730	42 00 00 HU 07 53 30	" 330Ω	"		
R731 R732	42 00 00 HU 07 61 00	" 1KΩ	"		
R733 R734	42 00 00 HU 07 58 20	" 820KΩ	"		
R735 R736	42 00 00 HU 07 61 10	" 1.1KΩ	"		
R737 R738	42 00 00 HU 07 61 00	" 1KΩ	"		
R739 R740	42 00 00 HU 07 62 20	" 2.2KΩ	"		
R641	42 00 00 HK 35 66 80	Carbon Resistor RD25 SM-8 6.8KΩ	カーボン抵抗		
R743	42 00 00 HK 35 62 20	" 2.2KΩ	"		
R745 R746	42 00 00 HK 35 91 00	" 1MΩ	"		
R747 R748	42 00 00 HK 35 64 70	" 4.7KΩ	"		
R749 R750	42 00 00 HK 35 71 50	" 15KΩ	"		
R751 R752	42 00 00 HK 35 64 70	" 4.7KΩ	"		
R753 R754	42 00 00 HK 35 71 20	" 12KΩ	"		
R755 R759	42 00 00 HK 35 51 00	" 100Ω	"		
R760	42 00 00 HV 35 53 30	Fire Proof Carbon Resistor RDF-25 330Ω	不燃化カーボン抵抗		
R761 R762	42 00 00 HK 35 78 20	Carbon Resistor RD25 SM-8 82KΩ	カーボン抵抗		
R763 R764	42 00 00 HK 35 73 90	" 39KΩ	"		
VR651 VR652	42 00 00 HY 00 02 10	Variable Resistor CR29R B2.2KΩ	VR		
VR653 VR654	42 00 00 HY 00 02 20	" B4.7KΩ	"		
VR655 VR656	42 00 00 HY 00 02 10	" B2.2KΩ	"		

※ : New Parts (新製品)

Ref. No.	Part No.	Description	(部 品 名)	Markets	Remarks
TR651	42:00:00:i A 08:14:00	Transistor	2SA814 O.Y	トランジスタ	
TR652	42:00:00:i C 23:20:10	"	2SC2320 E.Y	"	
TR653	42:00:00:i C 15:09:30	"	2SC1509 Q.R	"	
TR654	42:00:00:i A 09:99:10	"	2SA999 E.F	"	
TR655	42:00:00:i C 15:09:30	"	2SC1509 Q.R	"	
TR656	42:00:00:i C 23:20:10	"	2SC2320 E.F	"	
TR657	42:00:00:i A 09:99:10	"	2SA999 E.F	"	
TR658	42:00:00:i C 23:20:10	"	2SC2320 E.F	"	
TR659	42:00:00:i A 09:99:10	"	2SA999 E.F	"	
TR660	42:00:00:i C 23:20:10	"	2SC2320 E.F	"	
TR661	42:00:00:i B 05:44:00	"	2SB544	"	
TR662	42:00:00:i C 15:09:30	"	2SC1509 Q.R	"	
TR663	42:00:00:i A 09:99:10	"	2SA999 E.F	"	
TR665 TR670	42:00:00:i C 23:20:10	"	2SC2320 E.F	"	
TR671 TR672	42:00:00:i A 09:99:10	"	2SA999 E.F	"	
TR673 TR684	42:00:00:i C 23:20:30	"	2SC2320 L	"	
TR685 TR688	42:00:00:i C 23:20:10	"	2SC2320 E.F	"	
TR689 TR690	42:00:00:i A 09:99:10	"	2SA999 E.F	"	
TR691 TR692	42:00:00:i C 23:20:10	"	2SC2320 E.F	"	
IC651 IC652	42:00:00:i G 02:83:00	IC	μPC 4558	IC	
D651	42:00:00:i H 00:04:70	Diode	ID4BI	ダイオード	
※ D652 D653	42:00:00:i F 00:15:20	Zener Diode	HZ12BIL	ツェナーダイオード	
※ D654	42:00:00:i F 00:15:10	"	HZ-6CIL	"	
D655 D657	42:00:00:i F 00:00:40	Diode	IS1555	ダイオード	
D658	42:00:00:i F 00:07:70	"	VD1212	バリスタ	
D659	42:00:00:i F 00:00:40	"	IS1555	ダイオード	
※ D660 D661	42:00:00:i F 00:15:10	Zener Diode	HZ-6CIL	ツェナーダイオード	
D662 D678	42:00:00:i F 00:00:40	Diode	IS1555	ダイオード	
D679	42:00:00:i F 00:07:70	"	VD1212	バリスタ	
D683 D684	42:00:00:i F 00:00:40	"	IS1555	ダイオード	
D685 D686	42:00:00:i H 00:04:70	"	ID4BI	"	
D687 D688	42:00:00:i H 00:02:40	"	IS1885	"	
※ D689	42:00:00:i F 00:15:10	Zener Diode	HZ-6CIL	ツェナーダイオード	
F651 F652	42:00:00:KB 00:03:40	Fuse	1.5AT 250V	ヒューズ	R.A
	42:00:00:KB 00:06:80	"	1.25AT 250V	"	G.B
	42:00:00:KB 00:12:90	"	UL SS-2 1.5A 250V	"	U.C
F653 F654	42:00:00:KB 00:03:30	"	1.0AT 250V	"	R.A
	42:00:00:KB 00:07:30	"	1.0AT 250V	"	G.B
	42:00:00:KB 00:10:20	"	UL SS-2 1.0A 250V	"	U.C
F655 F656	42:00:00:KB 00:03:40	"	1.5AT 250V	"	R.A
	42:00:00:KB 00:06:80	"	1.25AT 250V	"	G.B
	42:00:00:KB 00:12:90	"	UL SS-2 1.5A 250V	"	U.C
	42:00:00:LA 00:23:20	Wrapping Pin	L Type P=7.5 3P	L型ラッピング端子板	
	42:00:00:LA 00:23:50	"	P=5 2P	"	
	42:00:00:LA 00:23:60	"	P=5 3P	"	

